

## Shopper Friendly Trouble Free Performance



### Engineered for High Volume Use!

Heavy Duty Entrance doors are engineered for high volume use, durability and peace of mind.

The STYLELINE® Heavy-Duty Plus Entrance Door stands up to the highest traffic areas and provides shopper-friendly, trouble-free performance.

- Stainless steel trim
- Heavy-duty hydraulic closer
- Condensation protection up to 75% RH\*
- NSF-certified

\*Ideal ambient temperatures of 75° F and cooler temperature of 38° F



## Shopper Friendly Trouble Free Performance

### Application:

- Cooler.

### Features:

- Top-mounted heavy-duty hydraulic closer.
- Three heavy-duty hinges per door.
- Condensation protection up to 75% relative humidity.
- Energy Controller pre-wired.
- NSF-certified door and frame.
- UL-certified door and frame.
- Removable threshold.
- Internal push bar.
- Stainless steel trim.
- Easy-clean covered frames.
- Internal stainless bottom kick plate.
- Finishes in satin black, anodized bright silver, satin silver or bright gold.
- 36"W x 80"H, 36"W x 84"H, single & double and custom sizes.\*

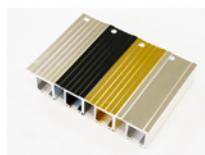
\* ADA compliant

### Options Available:

- External kick plate.
- STYLELINE LED Plus lighting system.
- Available in Classic® Plus and 20//20 Plus®.
- Full-length handle.
- Door locks and heavy duty bumper guards.
- Finish upgrade in anodized bright black.



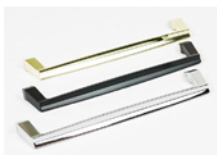
### Features & Options:



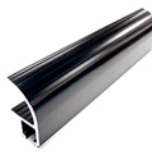
Finishes Available



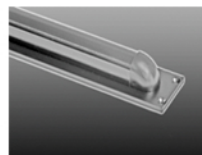
Hydraulic Closer



Standard Handle



Full Length Handle



Bumper Guard

Prices and specifications subject to change without notice.