

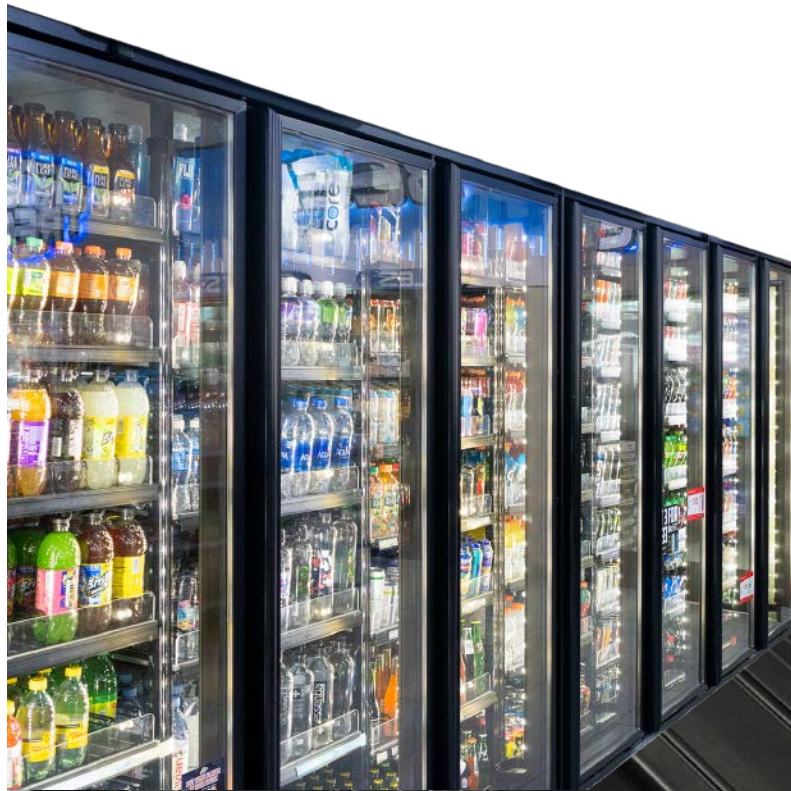


STYLELINE[®] offers hard coat anodized aluminum extrusions to meet most cooler, high humidity and freezer applications.

Bright Silver Smooth Shown



Contact Factory for Availability of Specific Extrusions



STYLELINE[®] offers hard coat anodized aluminum extrusions to meet most cooler, high humidity and freezer applications.

Satin Black Smooth Shown



Contact Factory for Availability of Specific Extrusions