

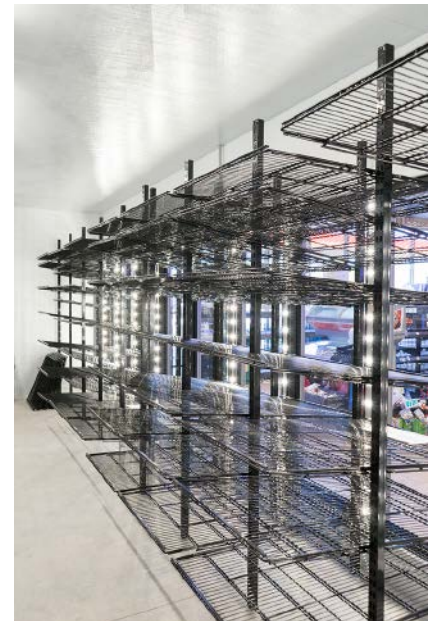
Styleline® **SHELVING**

STANDARD SHELVING PACKAGE



STYLELINE's NSF approved standard flat shelving is the perfect solution for cooler/freezer merchandising products.

- Standard shelving can accommodate a large variety of products
- Designed to withstand cold environments and high volume
- Full line of accessories available
- Price Tag Molding included and pre-installed
- Ideal for reach-in applications
- NSF approved



Flat Shelving Options & Accessories

NSF Certified Shelving System

Styleline® SHELVING

Flat Shelving:

STYLELINE® flat shelving system can accommodate a large range of beverages using different configurations and accessories to meet your current and/or next project.

Flat shelving consists of aluminum posts (galvanize/black) LED post brackets, Price Tag Molding (PTM) and are rated to support up-to 250 lbs per shelf.



Shelf Size	Color Options	
	White	Black
24" wide x 27" deep	S127WW	S127BB
26" wide x 27" deep	S227WW	S227BB
30" wide x 27" deep	S327WW	S327BB
Shelf Size	Color Options	
	White	Black
24" wide x 36" deep	ST1WW	ST1BB
26" wide x 36" deep	ST2WW	ST2BB
30" wide x 36" deep	ST3WW	ST3BB



Post Colors

