

HALF DOORS

PERFECT FOR CUSTOM PROJECTS



STYLELINE[®] Half Doors are ideal for custom applications without sacrificing space or performance.

Half Doors are available for cooler, high-humidity and freezer applications.

All STYLELINE[®] doors are DOE compliant.



Double Half Doors Shown

Ideal For Custom Applications



STYLELINE® CL Half Doors sets a new standard in protection against condensation by providing advanced thermal design fully compliant with DOE 2017 regulations.

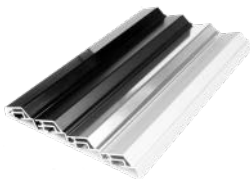
All standard finishes Available

Available for cooler, high humidity and freezer applications



Two-door center mullion system shown

Standard handle



Finishes



Standard Handle Finishes

NET COOLER OPENINGS		
# Doors	Basic Door Size	Net Cooler Opening (NCO)
1	24 3/4" x 31 3/8"	26 5/8" x 33 3/16"
2	24 3/4" x 31 3/8"	51 7/8" x 33 3/16"
3	24 3/4" x 31 3/8"	77 1/8" x 33 3/16"
4	24 3/4" x 31 3/8"	103 3/8" x 33 3/16"
1	29 15/16" x 31 9/16"	31 13/16" x 33 3/8"
2	29 15/16" x 31 9/16"	62 1/4" x 33 3/8"
3	29 15/16" x 31 9/16"	92 11/16" x 33 3/8"
4	29 15/16" x 31 9/16"	123 1/8" x 33 3/8"
1	31 3/8" x 24 3/4"	33 1/4" x 26 9/16"
2	31 3/8" x 24 3/4"	65 1/8" x 26 9/16"
3	31 3/8" x 24 3/4"	97 1/8" x 26 9/16"
4	31 3/8" x 24 3/4"	129 1/8" x 26 9/16"

