

FEATURING:

AUTOMATIC BEER CAVE DOOR

Now Patented!

HEAVY-DUTY ENTRANCE DOORS

with new virtually indestructible hydraulic closure system!

LED LIGHTING

is spectacular!



Prices and specifications subject to change without notice and do not include applicable freight and tax.

800.237.3940 • sales@STYLELINE.com • www.STYLELINE.com



TABLE OF CONTENTS

Energy Independence and Security Act of 2007 (EISA)	3
Ordering STYLELINE® Products.....	4
STYLELINE® Door Specifications & Sizes.....	5
STYLELINE® HybriDoor™ Systems	
Cooler	6
Freezer	7
STYLELINE® Classic® Plus Systems	
Cooler	8
Freezer	9
STYLELINE® 20//20® Plus Guaranteed 100% Condensation Free ...	10
STYLELINE® Heavy Duty-Entrance Doors.....	11
STYLELINE® Automatic Beer Cave (ABC) Doors	12
STYLELINE® Half Doors	13
STYLELINE® Fixed Windows	13
System Upgrades	
Lighting Upgrades	14
Finish Upgrades	14
Energy-Saving Accessories	
Energy Saver Control (ESC-3)	14
LED Motion Detector	14
Door Accessories	
Door Locks.....	14
Full Length Handles	14
Merchandising Systems	
Roll-Mart Cart.....	15
Deli-Mart Systems & Accessories	15
Shelving	16
Shelving Accessories	17
Gravity-Flow Shelving Package Upgrades.....	18
Gravity-Flow Shelving Package Upgrades.....	19
Super Slide-Trac™ Shelving	20
Terms & Warranty	21



Prices and specifications subject to change without notice and do not include applicable freight and tax.



ENERGY INDEPENDENCE AND SECURITY ACT OF 2007 (EISA)

WHAT YOU NEED TO KNOW.....

This is a summary of the basic mandates required by the new energy law as they affect glass display doors.

- Effective for all new stores and remodels after January 1, 2009
- Specific mandates for walk-in boxes and glass doors on walk-in coolers and freezers
- Requirements for glass doors:
 - Must have a self-closing hinge
 - Must have a high-performance glass package
 - Must be under specific maximum energy draws or must be equipped with automatic energy controller
- The STYLELINE® HybriDoor™
 - 75% RH protection
 - No energy controller required
 - Best solution for complete EISA compliance
- All STYLELINE swing doors will be compliant as follows:
 - Classic becomes Classic Plus...75%RH, fully pre-wired energy control
 - 20//20 becomes 20//20 Plus...guaranteed condensation protection, fully pre-wired energy control
 - Classic LT becomes Classic Plus Freezer...75%RH, fully pre-wired energy control
- Reach-in boxes and doors on reach-in cases are covered by a different law, one that will become effective January 1, 2010
- There are a small number of exceptions for boxes and/or doors as follows:
 - Projects with walk-in boxes greater than 3,000 square feet
 - Projects for medical, scientific, and research applications
 - Hang-on doors-only for ice merchandisers and other spot merchandisers

Visit our web-site www.STYLELINE.COM/EISA.html for more information.

Prices and specifications subject to change without notice and do not include applicable freight and tax.

ORDERING STYLELINE® PRODUCTS

TO EXPEDITE YOUR PRICE QUOTATION AND ORDER:

Please have the following information available when you call:

- Door model
- Door size
- Number of doors and frames in each lineup
- Finish
 - Standard smooth or serrated
 - Standard finish in satin black or anodized bright silver, satin silver or bright gold
 - Anodized bright black or Splash finish, inlays
- Left or right hand door hinges
- Locks (specify on which doors)
- Lighting choice:
 - Standard T-8
 - LED (specify motion sensors)
 - Advanced Lighting System (ALS)
 - Recessed ALS (available only on HybriDoor™ models)
- Shelving System
 - Standard (27" deep)
 - Slide-Trac™ (36" deep)
 - Super Slide-Trac™ (36", 43" or 60" deep)
 - Shelving /post color
 - Number of shelves per door
- Ship to address
- Desired ship date
- Special packaging or freight instructions

REORDERS/REPLACEMENT DOORS AND PARTS

In addition to the information above, you will need your STYLELINE® serial number when reordering door and frame systems and replacement doors, frames or parts.

LOCATING THE SERIAL NUMBER:

When facing the cooler, the serial number is located on the inside of the frame above the first door on the left.

ON-LINE QUOTES

Try our new **Quickie Quote**™ for a rapid check of pricing for your standard requirements. By requesting a "formal quote" our Customer Service team will be able to formalize your quote to include freight estimates and/or item not available in the on-line Quickie Quote service.

Prices and specifications subject to change without notice and do not include applicable freight and tax.



800.237.3940 • sales@STYLELINE.com • www.STYLELINE.com

DOOR SPECIFICATIONS ACROSS ALL MODELS

Package Price Includes:

- Tempered two-pane insulating safety glass with low E-coating and/or gas-filled air space in cooler doors.*
- Tempered three-pane insulating safety glass with low E-coating in freezer doors*
- Heavy-duty 27" deep shelving with price tag molding in black or white durable epoxy finish, five shelves per door (seven shelves with G3 and S5 models)
- Shelf standards (posts) with brackets and levelers
- Full-length high output T-8 fluorescent lighting with tube guards and electronic smart ballast
- Please see page 13 for optional upgrades and accessories

STYLELINE® Exclusive Features:

- Standard lifetime finish in satin black or anodized bright silver, satin silver or bright gold
- Stainless steel trim
- Easy-clean coved frames

Net Cooler Openings:

Door Model	K1	K2	K3	S2	S3	S5	G2	G3
Door Size W x H	23 $\frac{3}{4}$ " x 63"	26" x 63"	30" x 63"	26" x 72"	23 $\frac{3}{4}$ " x 72"	26" x 80"	30" x 72"	30" x 80"
NCO Height	64 $\frac{3}{4}$ "	64 $\frac{3}{4}$ "	64 $\frac{3}{4}$ "	73 $\frac{3}{4}$ "	73 $\frac{3}{4}$ "	81 $\frac{5}{8}$ "	73 $\frac{3}{4}$ "	81 $\frac{5}{8}$ "
Doors	NCO Width							
1	2' 1 $\frac{1}{16}$ "	2' 3 $\frac{13}{16}$ "	2' 7 $\frac{3}{4}$ "	2' 3 $\frac{13}{16}$ "	2' 1 $\frac{1}{16}$ "	2' 3 $\frac{13}{16}$ "	2' 7 $\frac{3}{4}$ "	2' 7 $\frac{3}{4}$ "
2	4' 1 $\frac{13}{16}$ "	4' 6 $\frac{5}{16}$ "	5' 2 $\frac{3}{16}$ "	4' 6 $\frac{5}{16}$ "	4' 1 $\frac{13}{16}$ "	4' 6 $\frac{5}{16}$ "	5' 2 $\frac{3}{16}$ "	5' 2 $\frac{3}{16}$ "
3	6' 9 $\frac{1}{16}$ "	6' 8 $\frac{13}{16}$ "	7' 8 $\frac{5}{8}$ "	6' 8 $\frac{13}{16}$ "	6' 9 $\frac{1}{16}$ "	6' 8 $\frac{13}{16}$ "	7' 8 $\frac{5}{8}$ "	7' 8 $\frac{5}{8}$ "
4	8' 5 $\frac{1}{16}$ "	8' 11 $\frac{5}{16}$ "	10' 3 $\frac{1}{16}$ "	8' 11 $\frac{5}{16}$ "	8' 5 $\frac{1}{16}$ "	8' 11 $\frac{5}{16}$ "	10' 3 $\frac{1}{16}$ "	10' 3 $\frac{1}{16}$ "
5	10' 1 $\frac{1}{16}$ "	11' 1 $\frac{13}{16}$ "	12' 9 $\frac{1}{2}$ "	11' 1 $\frac{13}{16}$ "	10' 1 $\frac{1}{16}$ "	11' 1 $\frac{13}{16}$ "	12' 9 $\frac{1}{2}$ "	12' 9 $\frac{1}{2}$ "
6	12' 2 $\frac{13}{16}$ "	13' 7 $\frac{5}{16}$ "	15' 6 $\frac{15}{16}$ "	13' 7 $\frac{5}{16}$ "	12' 2 $\frac{13}{16}$ "	13' 7 $\frac{5}{16}$ "	15' 6 $\frac{15}{16}$ "	15' 6 $\frac{15}{16}$ "
7	14' 2 $\frac{9}{16}$ "	15' 9 $\frac{13}{16}$ "	18' 1 $\frac{3}{8}$ "	15' 9 $\frac{13}{16}$ "	14' 2 $\frac{9}{16}$ "	15' 9 $\frac{13}{16}$ "	18' 1 $\frac{3}{8}$ "	18' 1 $\frac{3}{8}$ "
8	16' 2 $\frac{5}{16}$ "	18' 5 $\frac{1}{16}$ "	20' 7 $\frac{13}{16}$ "	18' 5 $\frac{1}{16}$ "	16' 2 $\frac{5}{16}$ "	18' 5 $\frac{1}{16}$ "	20' 7 $\frac{13}{16}$ "	20' 7 $\frac{13}{16}$ "
9	18' 2 $\frac{1}{16}$ "	20' 2 $\frac{13}{16}$ "	23' 2 $\frac{1}{4}$ "	20' 2 $\frac{13}{16}$ "	18' 2 $\frac{1}{16}$ "	20' 2 $\frac{13}{16}$ "	23' 2 $\frac{1}{4}$ "	23' 2 $\frac{1}{4}$ "
10	20' 1 $\frac{13}{16}$ "	22' 5 $\frac{5}{16}$ "	25' 8 $\frac{11}{16}$ "	22' 5 $\frac{5}{16}$ "	20' 1 $\frac{13}{16}$ "	22' 5 $\frac{5}{16}$ "	25' 8 $\frac{11}{16}$ "	25' 8 $\frac{11}{16}$ "
11	22' 4 $\frac{9}{16}$ "	24' 10 $\frac{13}{16}$ "	28' 6 $\frac{1}{8}$ "	24' 10 $\frac{13}{16}$ "	22' 4 $\frac{9}{16}$ "	24' 10 $\frac{13}{16}$ "	28' 6 $\frac{1}{8}$ "	28' 6 $\frac{1}{8}$ "
12	24' 4 $\frac{5}{16}$ "	27' 1 $\frac{5}{16}$ "	31' 9 $\frac{1}{16}$ "	27' 1 $\frac{5}{16}$ "	24' 4 $\frac{5}{16}$ "	27' 1 $\frac{5}{16}$ "	31' 9 $\frac{1}{16}$ "	31' 9 $\frac{1}{16}$ "
13	26' 4' 1 $\frac{1}{16}$ "	29' 3 $\frac{13}{16}$ "	33' 7"	29' 3 $\frac{13}{16}$ "	26' 4' 1 $\frac{1}{16}$ "	29' 3 $\frac{13}{16}$ "	33' 7"	33' 7"
14	28' 3 $\frac{13}{16}$ "	31' 6 $\frac{5}{16}$ "	36' 1 $\frac{7}{16}$ "	31' 6 $\frac{5}{16}$ "	28' 3 $\frac{13}{16}$ "	31' 6 $\frac{5}{16}$ "	36' 1 $\frac{7}{16}$ "	36' 1 $\frac{7}{16}$ "
15	30' 3 $\frac{9}{16}$ "	33' 8 $\frac{13}{16}$ "	38' 7 $\frac{7}{8}$ "	33' 8 $\frac{13}{16}$ "	30' 3 $\frac{9}{16}$ "	33' 8 $\frac{13}{16}$ "	38' 7 $\frac{7}{8}$ "	38' 7 $\frac{7}{8}$ "
16	32' 6 $\frac{1}{4}$ "	36' 2 $\frac{1}{4}$ "	41' 5' 1 $\frac{1}{4}$ "	36' 2 $\frac{1}{4}$ "	32' 6 $\frac{1}{4}$ "	36' 2 $\frac{1}{4}$ "	41' 5' 1 $\frac{1}{4}$ "	41' 5' 1 $\frac{1}{4}$ "
17	34' 6"	38' 4 $\frac{3}{4}$ "	43' 11 $\frac{11}{16}$ "	38' 4 $\frac{3}{4}$ "	34' 6"	38' 4 $\frac{3}{4}$ "	43' 11 $\frac{11}{16}$ "	43' 11 $\frac{11}{16}$ "
18	36' 5' 3 $\frac{3}{4}$ "	40' 7 $\frac{1}{4}$ "	46' 6 $\frac{1}{8}$ "	40' 7 $\frac{1}{4}$ "	36' 5' 3 $\frac{3}{4}$ "	40' 7 $\frac{1}{4}$ "	46' 6 $\frac{1}{8}$ "	46' 6 $\frac{1}{8}$ "
19	38' 5 $\frac{1}{2}$ "	42' 9 $\frac{3}{4}$ "	49' 9 $\frac{1}{16}$ "	42' 9 $\frac{3}{4}$ "	38' 5 $\frac{1}{2}$ "	42' 9 $\frac{3}{4}$ "	49' 9 $\frac{1}{16}$ "	49' 9 $\frac{1}{16}$ "
20	40' 5' 1 $\frac{1}{4}$ "	45' 1 $\frac{1}{4}$ "	51' 7"	45' 1 $\frac{1}{4}$ "	40' 5' 1 $\frac{1}{4}$ "	45' 1 $\frac{1}{4}$ "	51' 7"	51' 7"

Additional door sizes available by special order. Net cooler openings based on full-flange lineup.

Flangeless continuous lineup available upon request at no additional charge, and includes shelving components.

Please contact a customer service representative at 800-237-3940 for flangeless NCOs.

*All glass in STYLELINE® doors meets or exceeds the following certifications: ASTM C 1036, ASTM C 1048, ANSI Z97.1 2004, CPSC 16 CFR 1201, SCGG and EISA

Prices and specifications subject to change without notice and do not include applicable freight and tax.



- Energy draw beats EISA mandate
- Condensation protection up to 75% RH at 75° ambient / 38° cooler
- Field-reversible swing
- Package includes standard lighting and shelving
- EISA compliant glass package

Doors	Door Size W x H	K1	K2	K3	S2	S3	S5	G2	G3
		23¾" x 63"	26" x 63"	30" x 63"	26" x 72"	23¾" x 72"	26" x 80"	30" x 72"	30" x 80"
1	Package Price	2,071	2,168	2,302	2,303	2,190	2,420	2,453	2,697
	Package Weight (lbs)	185	200	210	210	205	230	230	250
2	Package Price	3,400	3,560	3,780	3,782	3,596	3,972	4,028	4,425
	Package Weight (lbs)	280	300	320	320	315	350	350	380
3	Package Price	4,528	4,740	5,032	5,037	4,789	5,288	5,362	5,890
	Package Weight (lbs)	420	450	480	480	470	525	525	570
4	Package Price	5,854	6,130	6,505	6,514	6,194	6,840	6,933	7,616
	Package Weight (lbs)	560	600	640	640	630	700	700	760
5	Package Price	7,203	7,546	8,001	8,011	7,623	8,413	8,531	9,371
	Package Weight (lbs)	700	750	800	800	780	875	875	950
6	Package Price	8,929	9,353	9,937	9,947	9,451	10,449	10,597	11,653
	Package Weight (lbs)	840	900	960	960	940	1,050	1,050	1,140
7	Package Price	10,255	10,743	11,410	11,424	10,856	12,001	12,168	13,379
	Package Weight (lbs)	980	1,050	1,120	1,120	1,100	1,225	1,225	1,330
8	Package Price	11,581	12,133	12,883	12,901	12,261	13,553	13,739	15,105
	Package Weight (lbs)	1,120	1,200	1,280	1,280	1,260	1,400	1,400	1,520
9	Package Price	12,930	13,549	14,379	14,398	13,690	15,126	15,337	16,860
	Package Weight (lbs)	1,260	1,350	1,440	1,440	1,410	1,575	1,575	1,710
10	Package Price	14,279	14,965	15,875	15,895	15,119	16,699	16,935	18,615
	Package Weight (lbs)	1,400	1,500	1,600	1,600	1,560	1,750	1,750	1,900
11	Package Price	15,982	16,746	17,788	17,811	16,923	18,714	18,974	20,868
	Package Weight (lbs)	1,540	1,650	1,760	1,760	1,730	1,925	1,925	2,090
12	Package Price	17,308	18,136	19,261	19,288	18,328	20,266	20,545	22,594
	Package Weight (lbs)	1,680	1,800	1,920	1,920	1,890	2,100	2,100	2,280
13	Package Price	18,657	19,552	20,757	20,785	19,757	21,839	22,143	24,349
	Package Weight (lbs)	1,820	1,950	2,080	2,080	2,040	2,275	2,275	2,470
14	Package Price	20,006	20,968	22,253	22,282	21,186	23,412	23,741	26,104
	Package Weight (lbs)	1,960	2,100	2,240	2,240	2,190	2,450	2,450	2,660
15	Package Price	21,355	22,384	23,749	23,779	22,615	24,985	25,339	27,859
	Package Weight (lbs)	2,100	2,250	2,400	2,400	2,340	2,625	2,625	2,850
16	Package Price	23,035	24,139	25,639	25,675	24,395	26,979	27,351	30,083
	Package Weight (lbs)	2,240	2,400	2,560	2,560	2,520	2,800	2,800	3,040
17	Package Price	24,384	25,555	27,135	27,172	25,824	28,552	28,949	31,838
	Package Weight (lbs)	2,380	2,550	2,720	2,720	2,670	2,975	2,975	3,230
18	Package Price	25,733	26,971	28,631	28,669	27,253	31,125	30,547	33,593
	Package Weight (lbs)	2,520	2,700	2,880	2,880	2,820	3,150	3,150	3,420
19	Package Price	27,082	28,387	30,127	30,166	28,682	31,698	32,145	35,348
	Package Weight (lbs)	2,660	2,850	3,040	3,040	2,970	3,325	3,325	3,610
20	Package Price	28,431	29,803	31,623	31,663	31,111	33,271	33,743	37,103
	Package Weight (lbs)	2,800	3,000	3,200	3,200	3,120	3,500	3,500	3,800

Estimated weights based on 27" shelving package. Please contact customer service for additional package weights.

Prices and specifications subject to change without notice and do not include applicable freight and tax.



- Designed for freezer temperatures to -10°
- Anti-condensate frame & mullion and glass heaters with fully pre-wired energy controller
- Condensation protection up to 75% RH ambient / 10° freezer
- Field-reversible swing
- Package includes standard lighting and shelving
- EISA compliant glass package



Doors	Door Size W x H	K1 23 ³ / ₄ " x 63"	K2 26" x 63"	K3 30" x 63"	S2 26" x 72"	S3 23 ³ / ₄ " x 72"	S5 26" x 80"	G2 30" x 72"	G3 30" x 80"
1	Package Price	3,114	3,261	3,467	3,464	3,295	3,641	3,697	4,077
	Package Weight (lbs)	210	225	240	230	225	260	260	310
2	Package Price	5,120	5,362	5,702	5,696	5,416	5,986	6,078	6,701
	Package Weight (lbs)	320	340	360	345	340	390	390	490
3	Package Price	6,820	7,143	7,594	7,587	7,216	7,973	8,095	8,923
	Package Weight (lbs)	480	510	540	520	515	585	585	735
4	Package Price	8,822	9,242	9,821	9,818	9,334	10,316	10,473	11,544
	Package Weight (lbs)	640	680	720	690	685	780	780	980
5	Package Price	10,858	11,371	12,086	12,081	11,488	12,693	12,886	14,206
	Package Weight (lbs)	800	850	900	860	855	1,000	1,000	1,250
6	Package Price	13,513	14,159	15,061	15,047	14,305	15,813	16,063	17,719
	Package Weight (lbs)	960	1,020	1,080	1,040	1,030	1,170	1,170	1,470
7	Package Price	15,515	16,258	17,288	17,278	16,423	18,162	18,441	20,340
	Package Weight (lbs)	1,120	1,190	1,260	1,210	1,200	1,365	1,365	1,715
8	Package Price	17,517	18,357	19,515	19,509	18,541	20,505	20,819	22,961
	Package Weight (lbs)	1,280	1,360	1,440	1,380	1,370	1,560	1,560	1,960
9	Package Price	19,553	20,486	21,780	21,772	20,695	22,882	23,232	25,623
	Package Weight (lbs)	1,440	1,530	1,620	1,550	1,540	1,780	1,780	2,230
10	Package Price	21,589	22,615	24,045	24,035	22,849	25,259	25,645	28,285
	Package Weight (lbs)	1,600	1,700	1,800	1,720	1,710	2,000	2,000	2,500
11	Package Price	24,210	25,373	26,982	26,969	25,630	28,351	28,787	31,757
	Package Weight (lbs)	1,760	1,870	1,980	1,900	1,885	2,145	2,145	2,695
12	Package Price	26,212	27,472	29,209	29,200	27,748	30,694	31,165	34,378
	Package Weight (lbs)	1,920	2,040	2,160	2,070	2,055	2,340	2,340	2,940
13	Package Price	28,248	29,601	31,474	31,463	29,902	33,071	33,578	37,040
	Package Weight (lbs)	2,080	2,210	2,340	2,240	2,225	2,560	2,560	3,210
14	Package Price	30,284	31,730	33,739	33,726	32,056	35,448	35,991	39,702
	Package Weight (lbs)	2,240	2,380	2,520	2,410	2,395	2,780	2,780	3,480
15	Package Price	32,320	33,859	36,004	35,989	34,210	37,825	38,404	42,364
	Package Weight (lbs)	2,400	2,550	2,700	2,580	2,565	3,000	3,000	3,750
16	Package Price	34,907	36,587	38,903	38,891	36,955	40,883	41,511	45,795
	Package Weight (lbs)	2,560	2,720	2,880	2,760	2,740	3,120	3,120	3,920
17	Package Price	36,943	38,716	41,168	41,154	39,109	43,260	43,924	48,457
	Package Weight (lbs)	2,720	2,890	3,060	2,930	2,910	3,340	3,340	4,190
18	Package Price	38,979	40,845	43,433	43,417	41,263	45,637	46,337	51,119
	Package Weight (lbs)	2,880	3,060	3,240	3,100	3,080	3,560	3,560	4,460
19	Package Price	41,015	42,974	45,698	45,680	43,417	48,014	48,750	53,781
	Package Weight (lbs)	3,040	3,230	3,420	3,270	3,250	3,780	3,780	4,730
20	Package Price	43,051	45,103	47,963	47,943	45,571	50,391	51,163	56,443
	Package Weight (lbs)	3,200	3,400	3,600	3,440	3,420	4,000	4,000	5,000

Estimated weights based on 27" shelving package. Please contact customer service for additional package weights.

Prices and specifications subject to change without notice and do not include applicable freight and tax.

- Condensation protection up to 75% RH at 75° ambient / 38° cooler
- Anti-condensate frame & mullion heaters with fully pre-wired energy controller
- Package includes standard lighting and shelving
- EISA compliant glass package

Doors	Door Size W x H	K1	K2	K3	S2	S3	S5	G2	G3
		23 ³ / ₄ " x 63"	26" x 63"	30" x 63"	26" x 72"	23 ³ / ₄ " x 72"	26" x 80"	30" x 72"	30" x 80"
1	Package Price	1,796	1,881	1,995	1,997	1,900	2,098	2,126	2,333
	Package Weight (lbs)	185	200	210	210	205	230	230	250
2	Package Price	2,948	3,086	3,274	3,278	3,118	3,442	3,490	3,827
	Package Weight (lbs)	280	300	320	320	315	350	350	380
3	Package Price	3,925	4,110	4,354	4,365	4,150	4,583	4,645	5,092
	Package Weight (lbs)	420	450	480	480	470	525	525	570
4	Package Price	5,074	5,314	5,629	5,642	5,366	5,928	6,005	6,584
	Package Weight (lbs)	560	600	640	640	630	700	700	760
5	Package Price	6,243	6,536	6,926	6,941	6,603	7,288	7,386	8,101
	Package Weight (lbs)	700	750	800	800	780	875	875	950
6	Package Price	7,723	8,093	8,581	8,597	8,173	9,033	9,163	10,057
	Package Weight (lbs)	840	900	960	960	940	1,050	1,050	1,140
7	Package Price	8,872	9,297	9,859	9,880	9,389	10,384	10,523	11,549
	Package Weight (lbs)	980	1,050	1,120	1,120	1,100	1,225	1,225	1,330
8	Package Price	10,021	10,501	11,131	11,157	10,605	11,729	11,883	13,041
	Package Weight (lbs)	1,120	1,200	1,280	1,280	1,260	1,400	1,400	1,520
9	Package Price	11,190	11,723	12,428	12,456	11,842	13,089	13,264	14,558
	Package Weight (lbs)	1,260	1,350	1,440	1,440	1,410	1,575	1,575	1,710
10	Package Price	12,359	12,945	13,725	13,755	13,079	14,449	14,645	16,075
	Package Weight (lbs)	1,400	1,500	1,600	1,600	1,560	1,750	1,750	1,900
11	Package Price	13,819	14,484	15,361	15,395	14,628	16,185	16,401	18,006
	Package Weight (lbs)	1,540	1,650	1,760	1,760	1,730	1,925	1,925	2,090
12	Package Price	14,968	15,688	16,633	16,672	15,844	17,530	17,761	19,498
	Package Weight (lbs)	1,680	1,800	1,920	1,920	1,890	2,100	2,100	2,280
13	Package Price	16,137	16,910	17,930	17,971	17,081	18,890	19,142	21,015
	Package Weight (lbs)	1,820	1,950	2,080	2,080	2,040	2,275	2,275	2,470
14	Package Price	17,306	18,132	19,227	19,270	18,318	20,250	20,523	22,532
	Package Weight (lbs)	1,960	2,100	2,240	2,240	2,190	2,450	2,450	2,660
15	Package Price	18,475	19,354	20,524	20,569	19,555	21,610	21,904	24,049
	Package Weight (lbs)	2,100	2,250	2,400	2,400	2,340	2,625	2,625	2,850
16	Package Price	19,915	20,875	22,135	22,187	21,083	23,331	23,639	25,955
	Package Weight (lbs)	2,240	2,400	2,560	2,560	2,520	2,800	2,800	3,040
17	Package Price	21,084	22,097	23,432	23,486	22,320	24,691	25,020	27,472
	Package Weight (lbs)	2,380	2,550	2,720	2,720	2,670	2,975	2,975	3,230
18	Package Price	22,253	23,319	24,729	24,785	23,557	26,051	26,401	28,989
	Package Weight (lbs)	2,520	2,700	2,880	2,880	2,820	3,150	3,150	3,420
19	Package Price	23,422	24,541	26,026	26,084	24,794	27,411	27,782	30,506
	Package Weight (lbs)	2,660	2,850	3,040	3,040	2,970	3,325	3,325	3,610
20	Package Price	24,591	25,763	27,323	27,383	26,031	28,771	29,163	32,023
	Package Weight (lbs)	2,800	3,000	3,200	3,200	3,120	3,500	3,500	3,800

Estimated weights based on 27" shelving package. Please contact customer service for additional package weights.

Prices and specifications subject to change without notice and do not include applicable freight and tax.

- Designed for freezer temperatures to -10° F
- Anti-condensate frame & mullion and glass heaters with fully pre-wired energy control
- Condensation protection up to 75% RH at 75° ambient / -10° cooler
- Package includes standard lighting and shelving
- EISA compliant glass package

CLASSIC[®] Plus FREEZER

Doors	Door Size W x H	K1 23¾" x 63"	K2 26" x 63"	K3 30" x 63"	S2 26" x 72"	S3 23¾" x 72"	S5 26" x 80"	G2 30" x 72"	G3 30" x 80"
1	Package Price	2,700	2,827	3,005	3,003	2,856	3,156	3,203	3,529
	Package Weight (lbs)	210	225	240	230	225	260	260	310
2	Package Price	4,436	4,646	4,938	4,936	4,694	5,186	5,264	5,797
	Package Weight (lbs)	320	340	360	345	340	390	390	490
3	Package Price	5,911	6,189	6,577	6,573	6,253	6,608	7,012	7,717
	Package Weight (lbs)	480	510	540	520	515	585	585	735
4	Package Price	7,642	8,006	8,505	8,506	8,086	8,936	9,065	9,984
	Package Weight (lbs)	640	680	720	690	685	780	780	980
5	Package Price	9,408	9,851	10,466	10,466	9,953	10,933	11,156	12,286
	Package Weight (lbs)	800	850	900	860	855	1,000	1,000	1,250
6	Package Price	11,695	12,251	13,027	13,019	12,379	13,689	13,897	15,307
	Package Weight (lbs)	960	1,020	1,080	1,040	1,030	1,170	1,170	1,470
7	Package Price	13,426	14,068	14,955	14,952	14,212	15,717	15,950	17,574
	Package Weight (lbs)	1,120	1,190	1,260	1,210	1,200	1,365	1,365	1,715
8	Package Price	15,157	15,885	16,883	16,885	16,045	17,745	18,003	19,841
	Package Weight (lbs)	1,280	1,360	1,440	1,380	1,370	1,560	1,560	1,960
9	Package Price	16,923	17,730	18,844	18,845	17,912	19,802	20,094	22,143
	Package Weight (lbs)	1,440	1,530	1,620	1,550	1,540	1,780	1,780	2,230
10	Package Price	18,689	19,575	20,805	20,805	19,799	21,859	22,185	24,445
	Package Weight (lbs)	1,600	1,700	1,800	1,720	1,710	2,000	2,000	2,500
11	Package Price	20,941	21,947	23,333	23,331	22,171	24,526	24,888	27,431
	Package Weight (lbs)	1,760	1,870	1,980	1,900	1,885	2,145	2,145	2,695
12	Package Price	22,672	23,764	25,261	25,264	24,004	26,554	26,941	29,698
	Package Weight (lbs)	1,680	1,800	1,920	1,920	1,890	2,100	2,100	2,280
13	Package Price	24,438	25,609	27,222	27,224	25,871	28,611	29,032	32,000
	Package Weight (lbs)	1,820	1,950	2,080	2,080	2,040	2,275	2,275	2,470
14	Package Price	26,204	27,454	29,183	29,184	27,738	30,668	31,123	34,302
	Package Weight (lbs)	1,960	2,100	2,240	2,240	2,190	2,450	2,450	2,660
15	Package Price	27,970	29,299	31,144	31,144	29,605	32,725	33,214	36,604
	Package Weight (lbs)	2,100	2,250	2,400	2,400	2,340	2,625	2,625	2,850
16	Package Price	30,187	31,643	33,639	33,643	31,963	35,363	35,879	39,555
	Package Weight (lbs)	2,240	2,400	2,560	2,560	2,520	2,800	2,800	3,040
17	Package Price	31,953	33,488	35,600	35,603	33,830	37,420	37,970	41,857
	Package Weight (lbs)	2,380	2,550	2,720	2,720	2,670	2,975	2,975	3,230
18	Package Price	33,719	35,333	37,561	37,563	35,697	39,477	40,061	44,159
	Package Weight (lbs)	2,520	2,700	2,880	2,880	2,820	3,150	3,150	3,420
19	Package Price	35,485	37,178	39,522	39,523	37,564	41,534	42,152	46,461
	Package Weight (lbs)	2,660	2,850	3,040	3,040	2,970	3,325	3,325	3,610
20	Package Price	37,251	39,023	41,483	41,483	39,431	43,591	44,243	48,763
	Package Weight (lbs)	2,800	3,000	3,200	3,200	3,120	3,500	3,500	3,800

Estimated weights based on 27" shelving package. Please contact customer service for additional package weights.

Prices and specifications subject to change without notice and do not include applicable freight and tax.

20/20[®] Plus

- Guaranteed 100% condensation-free at 75% RH, 75° ambient / 38° cooler
- Anti-condensate frame, mullion & glass heaters with fully pre-wired energy controller
- Package includes standard lighting and shelving
- EISA compliant glass package

Doors	Door Size W x H	K1	K2	K3	S2	S3	S5	G2	G3
		23 ³ / ₄ " x 63"	26" x 63"	30" x 63"	26" x 72"	23 ³ / ₄ " x 72"	26" x 80"	30" x 72"	30" x 80"
1	Package Price	2,558	2,679	2,847	2,845	2,706	2,990	3,034	3,341
	Package Weight (lbs)	210	225	240	230	225	260	260	310
2	Package Price	4,202	4,402	4,678	4,676	4,446	4,912	4,986	5,489
	Package Weight (lbs)	320	340	360	345	340	390	390	490
3	Package Price	5,599	5,862	6,229	6,228	5,923	6,542	6,640	7,306
	Package Weight (lbs)	480	510	540	520	515	585	585	735
4	Package Price	7,242	7,582	8,053	8,058	7,662	8,464	8,585	9,448
	Package Weight (lbs)	640	680	720	690	685	780	780	980
5	Package Price	8,908	9,331	9,911	9,911	9,428	10,413	10,566	11,631
	Package Weight (lbs)	800	850	900	860	855	1,000	1,000	1,250
6	Package Price	11,071	11,597	12,331	12,329	11,719	12,957	13,153	14,485
	Package Weight (lbs)	960	1,020	1,080	1,040	1,030	1,170	1,170	1,470
7	Package Price	12,714	13,317	14,155	14,159	13,458	14,879	15,098	16,627
	Package Weight (lbs)	1,120	1,190	1,260	1,210	1,200	1,365	1,365	1,715
8	Package Price	14,357	15,037	15,979	15,989	15,197	16,801	17,043	18,769
	Package Weight (lbs)	1,280	1,360	1,440	1,380	1,370	1,560	1,560	1,960
9	Package Price	16,023	16,786	17,837	17,842	16,963	18,750	19,024	20,952
	Package Weight (lbs)	1,440	1,530	1,620	1,550	1,540	1,780	1,780	2,230
10	Package Price	17,689	18,535	19,695	19,695	18,729	20,699	21,005	23,135
	Package Weight (lbs)	1,600	1,700	1,800	1,720	1,710	2,000	2,000	2,500
11	Package Price	19,829	20,772	22,081	22,090	20,993	23,216	23,556	25,948
	Package Weight (lbs)	1,760	1,870	1,980	1,900	1,885	2,145	2,145	2,695
12	Package Price	21,472	22,492	23,905	23,920	22,732	25,138	25,501	28,090
	Package Weight (lbs)	1,920	2,040	2,160	2,070	2,055	2,340	2,340	2,940
13	Package Price	23,138	24,241	25,763	25,773	24,498	27,087	27,482	30,273
	Package Weight (lbs)	2,080	2,210	2,340	2,240	2,225	2,560	2,560	3,210
14	Package Price	24,804	25,990	27,621	27,626	26,264	29,036	29,463	32,456
	Package Weight (lbs)	2,240	2,380	2,520	2,410	2,395	2,780	2,780	3,480
15	Package Price	26,470	27,739	29,479	29,479	28,030	30,985	31,444	34,639
	Package Weight (lbs)	2,400	2,550	2,700	2,580	2,565	3,000	3,000	3,750
16	Package Price	28,587	29,947	31,831	31,851	30,267	33,475	33,959	37,411
	Package Weight (lbs)	2,560	2,720	2,880	2,760	2,740	3,120	3,120	3,920
17	Package Price	30,253	31,696	33,689	33,704	32,033	35,424	35,940	39,594
	Package Weight (lbs)	2,720	2,890	3,060	2,930	2,910	3,340	3,340	4,190
18	Package Price	31,919	33,445	35,547	35,557	33,799	37,373	37,921	41,777
	Package Weight (lbs)	2,880	3,060	3,240	3,100	3,080	3,560	3,560	4,460
19	Package Price	33,585	35,194	37,405	37,410	35,565	39,322	39,902	43,960
	Package Weight (lbs)	3,040	3,230	3,420	3,270	3,250	3,780	3,780	4,730
20	Package Price	35,251	36,943	39,263	39,263	37,331	41,271	41,883	46,143
	Package Weight (lbs)	3,200	3,400	3,600	3,440	3,420	4,000	4,000	5,000

Estimated weights based on 27" shelving package. Please contact customer service for additional package weights.

Prices and specifications subject to change without notice and do not include applicable freight and tax.



- Self-closing hydraulic closure system with door stop
- Heavy-duty triple hinge design stands up to highest traffic areas
- Condensation protection up to 75% RH, 75° ambient / 38° cooler
- Guaranteed 100% condensation-free on 20//20® Plus models 75% RH, 75° ambient / 38° cooler
- Package includes 7" interior kick plate (exterior kick plate available)
- EISA compliant glass package



R//M PLUS™

- All glass for unobstructed view into walk-in
- Bottom silk screen for continuity in a line-up
- Interior push bar is standard
- Includes removable threshold (single door only) to accommodate variety of floor types
- Standard two-door system has no center mullion (available with a center mullion upon request)
- **OPTIONS:**
 - * T-8 Standard, ALS, and LED Lighting
 - * Roll-Mart cart (see page 15); interior push bar elimination

Door Size W x H	# Of Doors	Net Opening W x H	Weight	Normal Temp		20//20 Plus	
				Part	Price	Part	Price
36" x 80"	1	37 ⁷ / ₈ " x 81 ⁵ / ₈ "	155 lbs	01R3EX	2,321	01R3EY	3,320
	2	74 ¹ / ₂ " x 81 ⁵ / ₈ "	250 lbs	02R3EX	3,826	02R3EY	5,471
36" x 84"	1	37 ⁷ / ₈ " x 85 ³ / ₄ "	170 lbs	01R5EX	2,439	01R5EY	3,486
	2	74 ¹ / ₂ " x 85 ³ / ₄ "	265 lbs	02R5EX	4,018	02R5EY	5,746



R//M Plus Door shown
with optional
Roll-Mart Cart; Pg. 15



S//D Plus Door

S//D PLUS™

- Top 1/3 is clear glass for safety and bottom 2/3 is black silk screen
- Interior push bar is standard
- Includes removable threshold (single door only) to accommodate variety of floor types
- **OPTIONS:**
 - * T-8 Standard, ALS, and LED Lighting
 - * Full door silk screening available (\$450 per door)

Door Size W x H	# Of Doors	Net Opening W x H	Weight	Normal Temp		20//20® Plus	
				Part	Price	Part	Price
36" x 80"	1	37 ⁷ / ₈ " x 81 ⁵ / ₈ "	155 lbs	01D3EX	2,321	01D3EY	3,320
36" x 84"	1	37 ⁷ / ₈ " x 85 ³ / ₄ "	170 lbs	01D5EX	2,439	01D5EY	3,486



Heavy Duty Door Closer



Heavy Duty Hinge

Prices and specifications subject to change without notice and do not include applicable freight and tax.



- Patented automated glass entrance door assembly for walk-in coolers (US Patent #7,259,359)
- 65% RH protection on Classic® (75° F / 38° F)
- Guaranteed condensation protection on 20//20° (75° F / 38° F)
- Double-slide include two sliding doors & two fixed windows; available in 108" and 120" widths.
- Single-slide includes one sliding door & one fixed window; available in 78" width



Pricing includes AAADM certified installation - (may be higher in high labor locations)

Slide	NCO	Slider Opening	Door Size	Window Size	Est. Weight	Classic®	Part	20//20®	Part
Double	108 $\frac{1}{4}$ " x 90 $\frac{1}{4}$ "	42"	27" x 83"	25" x 82"	400 lbs	22,264	04A1C1	25,194	04A1C2
Double	120 $\frac{1}{4}$ " x 90 $\frac{1}{4}$ "	48"	29" x 83"	30" x 82"	430 lbs	24,088	04A2C1	27,748	04A2C2
Single left-to-right	78 $\frac{1}{4}$ " x 90 $\frac{1}{4}$ "	32"	38" x 83"	36 $\frac{1}{2}$ " x 82"	300 lbs	20,189	02A3C1	22,994	02A3C2
Single right-to left	78 $\frac{1}{4}$ " x 90 $\frac{1}{4}$ "	32"	38" x 83"	36 $\frac{1}{2}$ " x 82"	300 lbs	20,189	02A4C1	22,994	02A4C2

* Please allow four to six weeks for delivery.

* Automated door mechanism manufacturer's one year warranty includes installation, parts and labor.

* Satin silver header and jambs standard.



Attention Canadian Customers

* An additional estimated \$700.00 (USD) applies to all Canadian installs

Optional Upgrades	Single Slide	Double Slide
Satin Black finish upgrade	890	1,780
Extended warranty: three-year coverage on components, parts & labor	2,995	2,995
Auto Lock feature with key switch	3,445	3,445



Double-Slide ABC Doors



Single-Slide ABC Door

Prices and specifications subject to change without notice and do not include applicable freight and tax.



800.237.3940 • sales@STYLELINE.com • www.STYLELINE.com

- EISA compliant high-performance glass package.
- Pricing includes anti-condensate frame and mullion heaters.
- Includes automatic energy control.
- All standard colors available.



# Of Doors	Overall Size W x H	Net Opening W x H	Classic® Plus		20//20® Plus		Classic® Freezer Plus	
			Part	Price	Part	Price	Part	Price
1	24 ³ / ₄ " x 31 ³ / ₈ "	26 ⁵ / ₈ " x 33 ³ / ₁₆ "	01H1CX	1,262	01H1CY	1,340	01H1CZ	1,495
2	24 ³ / ₄ " x 31 ³ / ₈ "	51 ⁷ / ₈ " x 33 ³ / ₁₆ "	02H1CX	1,816	02H1CY	2,070	02H1CZ	2,396
3	24 ³ / ₄ " x 31 ³ / ₈ "	77 ¹ / ₈ " x 33 ³ / ₁₆ "	03H1CX	2,401	03H1CY	2,753	03H1CZ	3,239
1	29 ¹⁵ / ₁₆ " x 31 ⁹ / ₁₆ "	31 ³ / ₁₆ " x 33 ³ / ₈ "	01H3CX	1,356	01H3CY	1,412	01H3CZ	1,609
2	29 ¹⁵ / ₁₆ " x 31 ⁹ / ₁₆ "	62 ¹ / ₄ " x 33 ³ / ₈ "	02H3CX	1,878	02H3CY	2,230	02H3CZ	2,567
3	29 ¹⁵ / ₁₆ " x 31 ⁹ / ₁₆ "	92 ¹¹ / ₁₆ " x 33 ³ / ₈ "	03H3CX	2,510	03H3CY	2,981	03H3CZ	3,524
1	31 ³ / ₈ " x 24 ³ / ₄ "	33 ³ / ₄ " x 26 ⁹ / ₁₆ "	01H4CX	1,356	01H4CY	1,412	01H4CZ	1,609
2	31 ³ / ₈ " x 24 ³ / ₄ "	65 ¹ / ₈ " x 26 ⁹ / ₁₆ "	02H4CX	1,878	02H4CY	2,230	02H4CZ	2,567
3	31 ³ / ₈ " x 24 ³ / ₄ "	97 ¹ / ₈ " x 26 ⁹ / ₁₆ "	03H4CX	2,510	03H4CY	2,981	03H4CZ	3,524



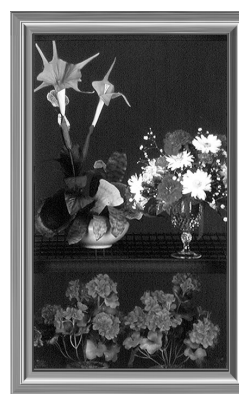
- New, improved design.
- "Finished" interior side eliminates the need a trim frame.
- High -performance, fully tempered glass package with Low-E coating and gas-filled air spaces.
- 75% RH protection on Fixed Window Plus™ NT (75°F/38°F).
- Guaranteed Condensation Protection on Fixed Window Plus™ 20//20® model (75°F/38°F).
- Fixed Windows also available in LT (75°F/-10°F) applications and custom sizes not shown - call for pricing.
- EISA compliant. UL approved.

Tip-to-Tip W x H	Net Opening W x H	Fixed Window Plus NT		Fixed Window 20//20 Plus		Fixed Window Plus LT	
		Part	Price	Part	Price	Part	Price
24 ⁹ / ₁₆ " x 73 ¹ / ₄ "	23 ⁵ / ₁₆ " x 72"	00W4SV	810	00W4SW	900	00W4SR	910
27 ⁵ / ₁₆ " x 73 ¹ / ₄ "	26 ³ / ₁₆ " x 72"	00W5SV	860	00W5SW	950	00W5SR	975
31 ¹ / ₄ " x 73 ¹ / ₄ "	30" x 72"	00W6SV	945	00W6SW	1,050	00W6SR	1,080

* For custom sizes other than those shown above please call for pricing



Half Doors



Fixed Window

Prices and specifications subject to change without notice and do not include applicable freight and tax.

SYSTEM UPGRADES & ACCESSORIES

LIGHTING UPGRADES

STYLELINE® LED Plus™ Lighting	Call for pricing
ALS T-8 Lighting with Prism Diffuser Lens	129 / light
Recessed ALS T-8 Lighting*	129 / light
Floral Lighting	47 / light

* Available for HybriDoor™

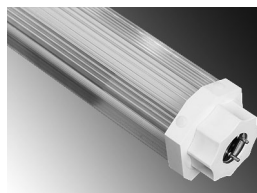


Styleline LED Plus™

FINISH UPGRADES

Premium Splash Finish*	365 / door
Anodized Bright Black Finish	70 / door

* Available in Cherry Tomato, Antique Silver, Granite & Forest Green.
Super 7 Service not available on premium finishes.



ALS Lighting



Recessed ALS

DOOR ACCESSORIES

Description	Part	Price
Classic® PlusDoor Locks with Door Order	5864	55
HybriDoor Locks with Door Order	5865	83
Retrofit door locks for any model: Silver	RLSLV	117
Retrofit door locks for any model: Gold	RLGLD	117
Retrofit door locks for any model: Black	RLBLK	117
Full-Length Handle	FLH	61 / door
36" Heavy-Duty Bumper Guard: Black	HDBG36BL	173



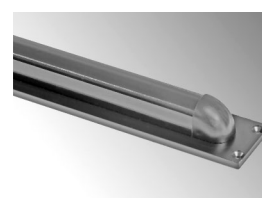
Door Lock



Retrofit Lock



Full-Length Handle



Heavy-Duty Bumper Guard

ENERGY-SAVING ACCESSORIES

Description	Part	Retrofit Price
ESC-3 Energy Saver Control	ESC-3	823

	Part	Price
LED Motion Sensor (Dimmer Control)	MTSNR	336 / frame

Includes one integrated motion sensors and one power supply per frame



LED Motion Sensor

Prices and specifications subject to change without notice and do not include applicable freight and tax.



800.237.3940 • sales@STYLELINE.com • www.STYLELINE.com

MERCHANDISING SYSTEMS

Roll-Mart Cart

- For use with STYLELINE® R//M Plus™ Doors on page 11
- Overall size: 32"W x 27"D x 83"H (additional widths available)
- Five 30"W x 27"D heavy-duty, epoxy-coated shelves with price tag molding
- 4" heavy-duty ball bearing swivel wheel casters (fixed/locking casters available)
- Available with Full Deli-Mart and Mini Deli-Mart

Description	Est. Weight	White	Black	Price
Roll-Mart with five shelves	100 lbs	RMC30X27WW	RMC30X27BB	1,444
Roll-Mart with full Deli-Mart	95 lbs	RMCDMWW	RMCFDMBB	1,949
Roll-Mart, Mini Deli-Mart & 5 shelves	95 lbs	RMCMINIWW	RMCMINIBB	1,810

Deli-Mart

Designed for presentation of refrigerated deli items, pre-packaged cold cuts, cheeses and bulk products.

Full Deli-Mart

- 66" high
- Twenty heavy-duty 10" hooks included
- Five merchandising baskets included
- Includes two color-coded posts

Size	Hooks	Baskets	White	Black	Price
24"W x 66"H for 24" or 26" door	20	5	DMF24WH	DMF24BL*	824
30"W x 66"H for 30" door	20	5	DMF30WH	DMF30BL*	905

* Special order. Please allow 4 weeks lead time

Mini Deli-Mart

- 30" high
- Up to twenty 10" hooks included
- Two support shelves included
- Order posts separately as needed

Size	Hooks	White	Black	Price
24"W x 30"H	16	DMMINI24WH	DMMINI24BL	615
26"W x 30"H	16	DMMINI26WH	DMMINI26BL	638
30"W x 30"H	20	DMMINI30WH	DMMINI30BL	684

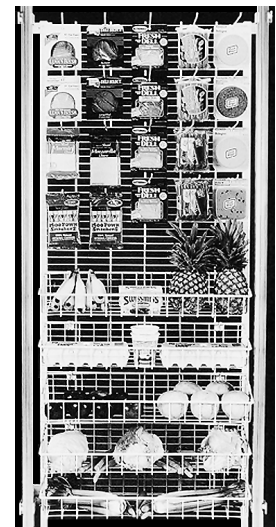
Deli-Mart Accessories

Description	White	Black	Price
Deli Basket, 24" - 26"	DB24WH	DB24BL*	75
Deli Basket, 30"	DB30WH	DB30BL	81
Deli Hooks	DHWH	DHBL	7
Shelf / Basket Hooks	BHWH	BHBL	7

*Special order – please allow six weeks for delivery.



Roll-Mart Cart



Deli-Mart



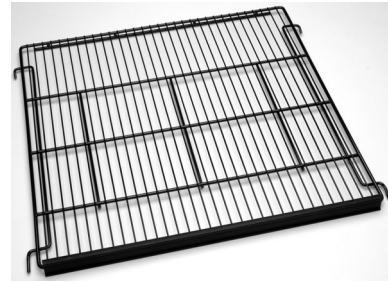
Mini Deli-Mart

Prices and specifications subject to change without notice and do not include applicable freight and tax.

All shelves include price tag molding

27" Deep Flat Shelf

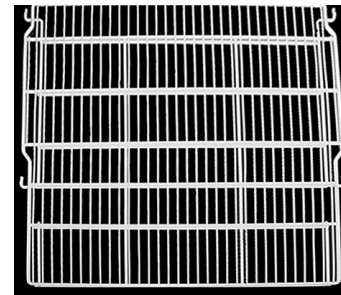
Shelf Size	White	Black	Price
24" wide	S127WW	S127BB	58
26" wide	S227WW	S227BB	66
30" wide	S327WW	S327BB	72



Flat Shelf

36" Slide-Trac™ Shelf

Shelf Size	White	Black	Price
24" wide x 36" deep	ST1WW	ST1BB	79
26" wide x 36" deep	ST2WW	ST2BB	81
30" wide x 36" deep	ST3WW	ST3BB	87



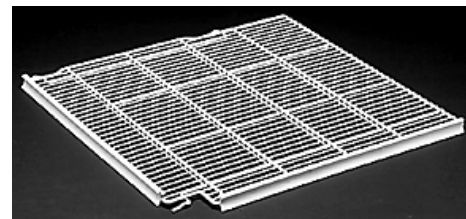
Slide-Trac Shelf

Corner Shelf

For corners where doors meet, includes two price tag moldings

Shelf Size	White	Black	Price
24" wide x 24" deep	CS24WW*	CS24BB*	220
26" wide x 24" deep	CS26WW*	CS26BB*	244
30" wide x 24" deep	CS30WW	CS30BB	267
S-hook for corner shelf	CHWH	CHBL	7

*Special order – please allow six weeks for delivery.



Corner Shelf

Wire Basket

All baskets include price tag moldings

Shelf Size	White	Black	Price
30" wide x 24" deep	WB30WH	WB30BL	195

Optional

Basket Dividers	WBD24WH	WBD24BL	21
-----------------	---------	---------	----



Wire Basket with optional lane dividers

Prices and specifications subject to change without notice and do not include applicable freight and tax.

SHELVING ACCESSORIES

27" Deep Accessories

Front & Side Guards

24" wide	FS24WH	PG127BL	38
26" wide	FS26WH	PG227BL	43
30" wide	FS30WH	FS30BL	49
Lane Divider	3014	3960	14

36" Deep Slide-Trac™ Accessories

Perimeter Guard	White	Black	Price
24" wide	PS136WH	PS136BL	42
26" wide	PS236WH	PS236BL	42
30" wide	PS336WH	PS336BL	46
Lane Divider	STLNDWH	STLNDBL	14

Additional Parts

	White	Black	Price
Milk Stop	MSWH	MSBL	7

Price Tag Molding

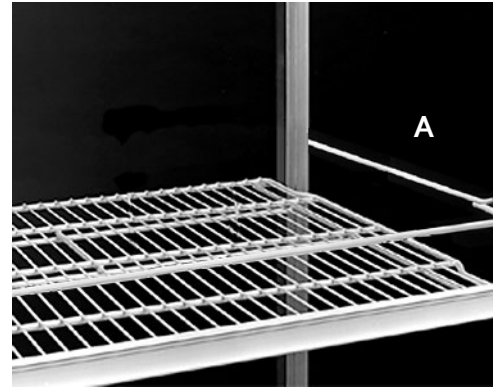
24" wide	PTM24WH	PTM24BL	7
26" wide	PTM26WH	PTM26BL	7
30" wide	PTM30WH	PTM30BL	7

Post Assembly with Brackets - Standard

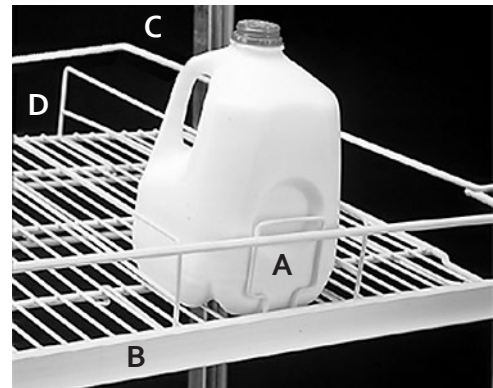
Shelf Standard	White	Black	Price	Galv	Price
63" high	PST63WH	—	95	PST63X	53
80" high	PST80WH	PST80BL	98	PST80X	56
84" high	PST84WH	PST84BL	100	PST84X	58
90" high	PST90WH	PST90BL	102	PST90X	60
Post Holder	—	—		4072X2	9
7½" Extension Bracket				EB75	15

Post Assembly with Brackets - LED

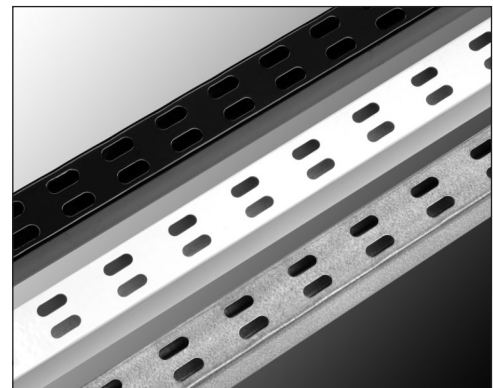
Shelf Standard	White	Black	Price	Galv	Price
63" high	PST63WLED	PST63BLED	105	PST63XLED	63
80" high	PST80WLED	PST80BLED	108	PST80XLED	66
84" high	PST84WLED	PST84BLED	110	PST84XLED	68
90" high	PST90WLED	PST90BLED	112	PST90XLED	70
LED Extension Bracket				EBLED	7.50



A. Front & Side Guards



A. Milk Stop
B. Price Tag Molding
C. Perimeter Guard
D. Lane Divider



Shelf Standards

Prices and specifications subject to change without notice and do not include applicable freight and tax.

GRAVITY-FLOW SHELVING PACKAGE UPGRADES

- To upgrade all shelving to the desired model and size, add the additional charge shown below to the door package price(s) on pages 6-10.
- All packages on pages 6-10 include price tag molding, five shelves per door (seven shelves with G3 and S5) and shelf standards with brackets and levelers.
- Slide-Trac™ packages include gravity-flow shelving in epoxy-coated white or black.
- Super Slide-Trac™ packages include three-position adjustable gravity-flow shelving in epoxy-coated white or black, base assembly, color-coordinated full perimeter guard, glide sheet, lane dividers and posts.

Door Width		23¼"	26"		30"	
Door Model		K1, S3	K2, S2	S5	K3, G2	G3
Doors	Number of shelves	5	5	7	5	7
1	36" Slide-Trac	175	162	210	168	218
	36" Super Slide-Trac	1,204	1,272	1,768	1,379	1,813
	43" Super Slide-Trac	1,208	1,299	1,816	1,411	1,860
	60" Super Slide-Trac	CALL	CALL	CALL	CALL	CALL
2	36" Slide-Trac	327	301	396	313	413
	36" Super Slide-Trac	2,219	2,352	3,134	2,564	3,431
	43" Super Slide-Trac	2,230	2,409	3,303	2,633	3,530
	60" Super Slide-Trac	CALL	CALL	CALL	CALL	CALL
3	36" Slide-Trac	479	440	583	457	607
	36" Super Slide-Trac	3,276	3,518	4,691	3,838	5,138
	43" Super Slide-Trac	3,336	3,605	4,732	3,941	5,287
	60" Super Slide-Trac	CALL	CALL	CALL	CALL	CALL
4	36" Slide-Trac	631	579	769	602	802
	36" Super Slide-Trac	4,276	4,598	6,161	5,024	6,756
	43" Super Slide-Trac	4,358	4,716	6,332	5,163	6,956
	60" Super Slide-Trac	CALL	CALL	CALL	CALL	CALL
5	36" Slide-Trac	783	718	956	747	997
	36" Super Slide-Trac	5,277	5,678	7,632	6,209	8,375
	43" Super Slide-Trac	5,380	5,826	7,846	6,384	8,626
	60" Super Slide-Trac	CALL	CALL	CALL	CALL	CALL
6	36" Slide-Trac	958	880	1,166	914	1,214
	36" Super Slide-Trac	6,552	7,036	9,382	7,676	10,276
	43" Super Slide-Trac	6,672	7,210	9,464	7,882	10,574
	60" Super Slide-Trac	CALL	CALL	CALL	CALL	CALL
7	36" Slide-Trac	1,110	1,019	1,352	1,059	1,409
	36" Super Slide-Trac	7,552	8,116	10,852	8,862	11,894
	43" Super Slide-Trac	7,694	8,321	11,064	9,104	12,243
	60" Super Slide-Trac	CALL	CALL	CALL	CALL	CALL
8	36" Slide-Trac	1,262	1,158	1,538	1,204	1,604
	36" Super Slide-Trac	8,552	9,196	12,322	10,048	13,512
	43" Super Slide-Trac	8,716	9,432	12,664	10,326	13,912
	60" Super Slide-Trac	CALL	CALL	CALL	CALL	CALL
9	36" Slide-Trac	1,414	1,297	1,725	1,349	1,799
	36" Super Slide-Trac	9,553	10,276	13,793	11,233	15,131
	43" Super Slide-Trac	9,738	10,542	14,178	11,547	15,582
	60" Super Slide-Trac	CALL	CALL	CALL	CALL	CALL
10	36" Slide-Trac	1,566	1,436	1,912	1,494	1,994
	36" Super Slide-Trac	10,554	11,356	15,264	12,418	16,750
	43" Super Slide-Trac	10,760	11,652	15,692	12,768	17,252
	60" Super Slide-Trac	CALL	CALL	CALL	CALL	CALL

Prices and specifications subject to change without notice and do not include applicable freight and tax.

GRAVITY-FLOW SHELVING PACKAGE UPGRADES

- To upgrade all shelving to the desired model and size, add the additional charge shown below to the door package price(s) on pages 6-10.
- All packages on pages 6-10 include price tag molding, five shelves per door (seven shelves with G3 and S5) and shelf standards with brackets and levelers
- Slide-Trac™ packages include gravity-flow shelving in epoxy-coated white or black.
- Super Slide-Trac™ packages include three-position adjustable gravity-flow shelving in epoxy-coated white or black, base assembly, color-coordinated full perimeter guard, glide sheet, lane dividers and posts.

Door Width		23¼"	26"		30"	
Door Model		K1, S3	K2, S2	S5	K3, G2	G3
Doors	Number of shelves	5	5	7	5	7
11	36" Slide-Trac	1,741	1,598	2,121	1,661	2,211
	36" Super Slide-Trac	11,828	12,714	17,013	13,886	18,650
	43" Super Slide-Trac	12,052	13,037	17,396	14,267	19,199
	60" Super Slide-Trac	CALL	CALL	CALL	CALL	CALL
12	36" Slide-Trac	1,893	1,737	2,307	1,806	2,406
	36" Super Slide-Trac	12,828	13,794	18,483	15,072	20,268
	43" Super Slide-Trac	13,074	14,148	18,996	15,489	20,868
	60" Super Slide-Trac	CALL	CALL	CALL	CALL	CALL
13	36" Slide-Trac	2,045	1,876	2,494	1,951	2,601
	36" Super Slide-Trac	13,829	14,874	19,954	16,257	21,887
	43" Super Slide-Trac	14,096	15,258	20,510	16,710	22,538
	60" Super Slide-Trac	CALL	CALL	CALL	CALL	CALL
14	36" Slide-Trac	2,197	2,015	2,681	2,096	2,796
	36" Super Slide-Trac	14,830	15,954	21,425	17,442	23,506
	43" Super Slide-Trac	15,118	16,368	22,024	17,931	24,208
	60" Super Slide-Trac	CALL	CALL	CALL	CALL	CALL
15	36" Slide-Trac	2,349	2,154	2,868	2,241	2,991
	36" Super Slide-Trac	15,831	17,034	22,896	18,627	25,125
	43" Super Slide-Trac	16,140	17,478	23,538	19,152	25,878
	60" Super Slide-Trac	CALL	CALL	CALL	CALL	CALL
16	36" Slide-Trac	2,524	2,316	3,076	2,408	3,208
	36" Super Slide-Trac	17,104	18,392	24,644	20,096	27,024
	43" Super Slide-Trac	17,432	18,864	25,328	20,652	27,824
	60" Super Slide-Trac	CALL	CALL	CALL	CALL	CALL
17	36" Slide-Trac	2,676	2,455	3,263	2,553	3,403
	36" Super Slide-Trac	18,105	19,472	26,115	21,281	28,643
	43" Super Slide-Trac	18,454	19,974	26,842	21,873	29,494
	60" Super Slide-Trac	CALL	CALL	CALL	CALL	CALL
18	36" Slide-Trac	2,828	2,594	3,450	2,698	3,598
	36" Super Slide-Trac	19,106	20,552	27,586	22,466	30,262
	43" Super Slide-Trac	19,476	21,084	28,356	23,094	31,164
	60" Super Slide-Trac	CALL	CALL	CALL	CALL	CALL
19	36" Slide-Trac	2,980	2,733	3,637	2,843	3,793
	36" Super Slide-Trac	20,107	21,632	29,057	23,651	31,881
	43" Super Slide-Trac	20,498	22,194	29,870	24,315	32,834
	60" Super Slide-Trac	CALL	CALL	CALL	CALL	CALL
20	36" Slide-Trac	3,132	2,872	3,824	2,988	3,988
	36" Super Slide-Trac	21,108	22,712	30,528	24,836	33,500
	43" Super Slide-Trac	21,520	23,304	31,384	25,536	34,504
	60" Super Slide-Trac	CALL	CALL	CALL	CALL	CALL

Prices and specifications subject to change without notice and do not include applicable freight and tax.

- Super Slide-Trac™ three-position adjustable gravity-flow shelves available in epoxy-coated white or black, and includes price tag molding
- Package includes base assembly and posts required for standard setup

Shelf	36" Deep SST Shelving			43" Deep SST Shelving			60" Deep SST Shelving		
	Part		Price	Part		Price	Part		Price
	White	Black		White	Black		White	Black	
24" width	SST136WH	SST136BL	128	SST143WH	SST143BL	132	SST160WH*	SST160BL*	195
26" width	SST236WH	SST236BL	132	SST243WH	SST243BL	137	SST260WH*	SST260BL*	200
30" width	SST336WH	SST336BL	139	SST343WH	SST343BL	145	SST360WH*	SST360BL*	209
Lane Dividers	LNDIV36WH	LNDIV36BL	21	LNDIV43WH	LNDIV43BL	23	LG60WH*	LG60BL*	53

Perimeter Guard, single wire

24" width	PS136WH	PS136BL	42	PS143WH	PS143BL	43	PS160WH*	PS160BL*	49
26" width	PS236WH	PS236BL	42	PS243WH	PS243BL	43	PS260WH*	PS260BL*	49
30" width	PS336WH	PS336BL	46	PS343WH	PS343BL	46	PS360WH*	PS360BL*	56

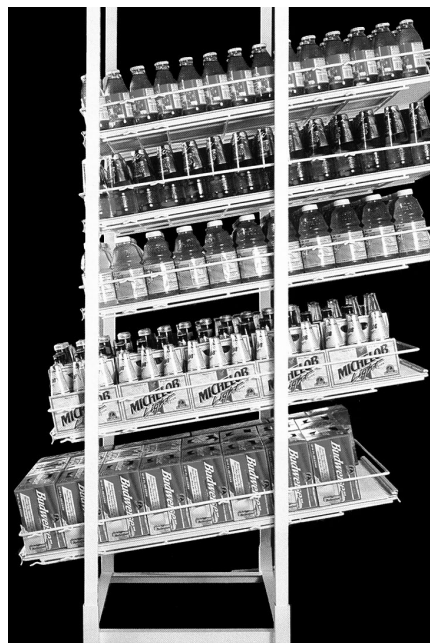
Glide Sheet

24" width	G136WH	G136BL	46	G143WH	G143BL	46	G160WH*	G160BL*	52
26" width	G236WH	G236BL	49	G243WH	G243BL	49	G260WH*	G260BL*	56
30" width	G336WH	G336BL	51	G343WH	G343BL	51	G360WH*	G360BL	64

SST Base and Top

24" wide base	B124	119	B124	119	B60	155
26" wide base	B224	122	B224	122	B60	155
30" wide base	B324	124	B324	124	B60	155

*Special order – please allow six weeks for delivery.



Super Slide-Trac™ Shelving

Prices and specifications subject to change without notice and do not include applicable freight and tax.

TERMS & WARRANTY

Contract Between Buyer & Seller

A written order and acknowledgment shall constitute the contract between Buyer and Seller, and said contract may not be amended or rescinded except by written agreement by both parties, referring expressly to this contract.

Terms

All credit terms are net 30 days from date of invoice. Credit is subject to approval upon receipt of completed credit application. Any goods shipped prior to credit approval shall be shipped C.O.D., Cashiers Check, or Pre-Payment. Goods may not be returned for credit unless prior authorization and a return authorization number has been issued.

Price & Specifications

All prices and specifications are subject to change without notice. Prices are in U.S. Dollars.

Delays

Commercial Refrigerator Door Company cannot be liable for loss or damage arising from delay in fulfilling or failure to fulfill any order in accordance with its terms whereas such delay or failure is caused by shortage of materials, delays of carriers, embargoes, fires, floods, strikes, wars, acts of God or other causes beyond its control.

Warranty

Commercial Refrigerator Door Company warrants its products against defects in workmanship and materials for a period of two years from date of shipment. Ballasts are warranted against defects in workmanship and materials for five years. In addition, Commercial Refrigerator Door Company warrants its insulating glass against condensation between lites of glass for a period of 20 years for unheated glass and ten years for heated glass.

Under this warranty, Commercial Refrigerator Door Company's liability is specifically limited to repairing or replacing, F.O.B. Commercial Refrigerator Door Company's factory, at our option, any part of the product determined by Commercial Refrigerator Door Company to be not in conformance with this warranty. This warranty does not include any on-site repair or replacement costs.

The customer service department will provide written authorization to either return or field-scrap the defective part. Upon receipt of the defective part, warranty status will be verified and an appropriate credit issued.

This warranty shall not apply to any product which is repaired or altered without our acknowledgment and consent, operated or installed contrary to our instructions, subjected to misuse or improper maintenance, damaged by accident or negligence, or not paid for in full.

This warranty is extended to the original purchaser and is in lieu of all other warranties, expressed or implied, including but not limited to warranties of merchantability or fitness for a particular use. THERE ARE NO WARRANTIES OTHER THAN THAT DESCRIBED HEREIN AND NO REPRESENTATIVE OF COMMERCIAL REFRIGERATOR DOOR COMPANY HAS AUTHORITY TO ALTER THIS WARRANTY.

Limits of Liability

Commercial Refrigerator Door Company shall not be held liable for damages for any breach of warranty in an amount exceeding the purchase price of the product which is found to be defective.

Delivery

F.O.B. Sarasota, Florida

Prices and specifications subject to change without notice and do not include applicable freight and tax.



Providing the ultimate convergence of energy efficiency and sustainability, the STYLELINE® HybriDoor™ makes “going green” an easy decision as well as a responsible one

FEATURES

- Fully compliant with The Energy Independence and Security Act as effective January 1, 2009 for all new stores and remodel projects.
- Sets a new standard in protection against condensation, 75% RH, a greater than 15% improvement over the old industry standard.
- The advanced thermal design and strategic anti-condensate heater placement deliver enhanced condensation protection with very low energy use. In a word, it's EFFICIENT.
- Two year material and workmanship warranty.

STYLELINE TECH TALK

The Energy Independence and Security Act of 2007, with an effective date of January 1, 2009 mandates specific requirements and specifications for glass display doors for all walking coolers and freezers. STYLELINE® HybriDoor™ meets all three mandates.

- Self-closing hinge system... **YES!**
- Glass package constructed with Low-E glass coating AND a gas-filled airspace... **YES!**
- Energy consumption under 3 watts per square foot of door opening... **YES!**

OPTIONAL UPGRADES & ACCESSORIES

- Additionally available for freezer applications as STYLELINE® HybriDoor™ Freezer model. Also fully compliant with Energy Act mandates.
- Latest generation LED lighting available as an integrated display lighting option, at an additional cost, to further promote sustainability, increase energy savings, and help products and sales to “pop”.



Prices and specifications subject to change without notice and do not include applicable freight and tax.



800.237.3940 • sales@STYLELINE.com • www.STYLELINE.com