

# Styleline® **PROFILE**

## **MAXIMUM PRODUCT VISIBILITY**



STYLELINE® Profile provides outstanding product visibility from all angles. Elegant design and slim profile allows customers to focus on the product behind the doors.

- French hinged glass doors with no center mullion provide outstanding view of products from every angle.
- New ultra-thin glass door perimeter and handle design provides greater merchandise visibility.

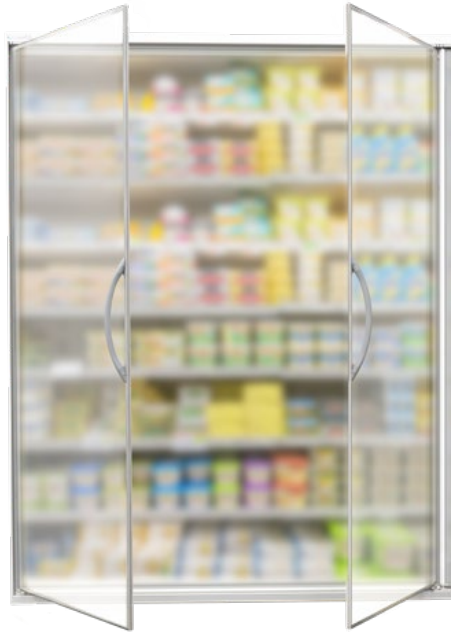


 **STYLELINE®**  
By Commercial Refrigerator Door Company

[www.styleline.com](http://www.styleline.com)

# Maximum Product Visibility

## Styleline<sup>®</sup> PROFILE



**APPLICATION:** Cooler



**PROTECTION:** Best suited for food retail cooler applications. Low profile door and frame system



**LIGHTING:** Styleline<sup>®</sup> LED Plus



**WARRANTY:** 2-years workmanship and materials, 5-years Styleline<sup>®</sup> LED lighting, 10 years glass pack

- Fully compliant with DOE 2017 regulations.
- No door heat is required keeping energy costs low. This is made possible with our advanced dual-pane glass pack.
- French hinge doors with no center mullion provide outstanding view of products from every angle.
- New ultra-thin door perimeter and handle design provides greater merchandise visibility.
- New concave wiper design reduces door-to-door interference, maximizes energy savings, and helps keep glass moisture-free.
- Energy efficient aluminum frame.

### What's Included:

- STYLELINE<sup>®</sup> LED Plus lighting system.
- Standard white or black shelving.
- Call us for sizes and availability.



Elegant design door handle



Top Door Hinge



Bottom Door Hinge