

Superior Product Visibility

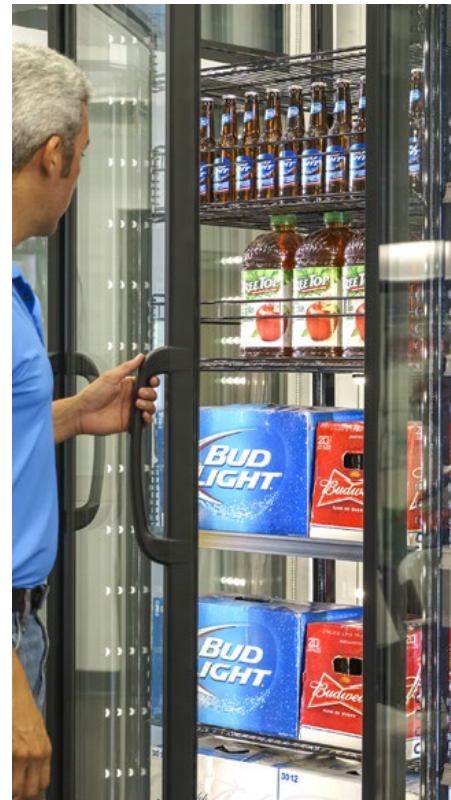
Door & Frame Lineup

Styleline[®] RM

Net Cooler Openings chart can be used for STYLELINE[®] RM only.

Door Size WxH	24" X 75"	30" X 75"	30" X 80"
NCO Height	75"	75"	81.647"

Door Lineup	Net Cooler Opening Width		
1	2'-11 1/8"	2'-7 13/16"	2'-7 13/16"
2	4'-0 13/16"	5'-2 1/4"	5'-2 1/4"
3	6'-0 1/2"	7'-8 11/16"	7'-8 11/16"
4	8'-0 3/16"	10'-3 1/8"	10'-3 1/8"
5	9'-11 7/8"	12'-9 9/16"	12'-9 9/16"
6	12'-0 3/4"	15'-5 3/16"	15'-5 3/16"
7	14'-0 7/16"	17'-11 5/8"	17'-11 5/8"
8	16'-0 1/8"	20'-6 1/16"	20'-6 1/16"
9	17'-11 13/16"	23'-0 1/2"	23'-0 1/2"
10	19'-11 1/2"	25'-6 15/16"	25'-6 15/16"
11	22'-0 3/8"	28'-2 1/2"	28'-2 1/2"
12	24'-0 1/16"	30'-8 15/16"	30'-8 15/16"
13	25'-11 3/4"	33'-3 3/8"	33'-3 3/8"
14	27'-11 7/16"	35'-9 13/16"	35'-9 13/16"
15	29'-11 1/8"	38'-4 1/4"	38'-4 1/4"
16	32'-0"	40'-11 7/8"	40'-11 7/8"
17	33'-11 11/16"	43'-6 5/16"	43'-6 5/16"
18	35'-11 3/8"	46'-0 3/4"	46'-0 3/4"
19	37'-11 1/16"	48'-7 3/16"	48'-7 3/16"
20	39'-10 3/4"	51'-1 5/8"	51'-1 5/8"



Styleline[®] RM