

Styleline[®] RM

ENERGY EFFICIENT SOLUTION WITH SUPERIOR PRODUCT VISIBILITY

STYLELINE[®] RM delivers excellent energy efficiency solutions with superior product visibility for coolers and freezers under normal to extreme ambient conditions.

- Price leader
- Superior product visibility and merchandising impact
- Built-in durability with proven hardware simplicity and reliability
- Molded case frame made with strong, non-conductive material and fiberglass insulation for greater energy savings
- DOE 2017 Compliant

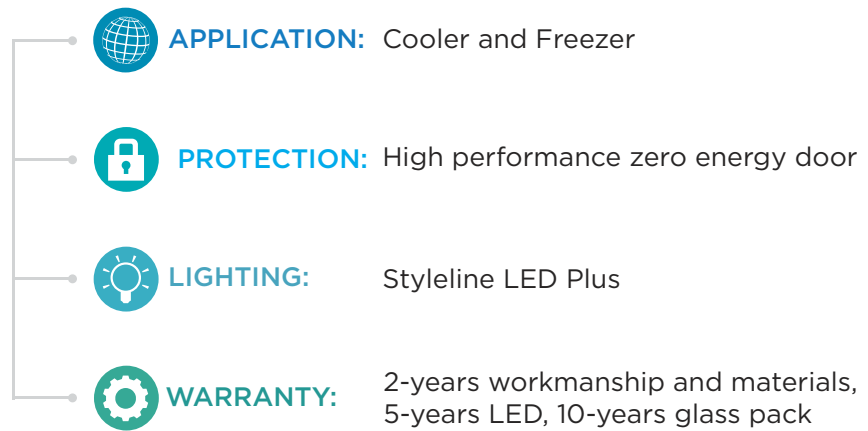
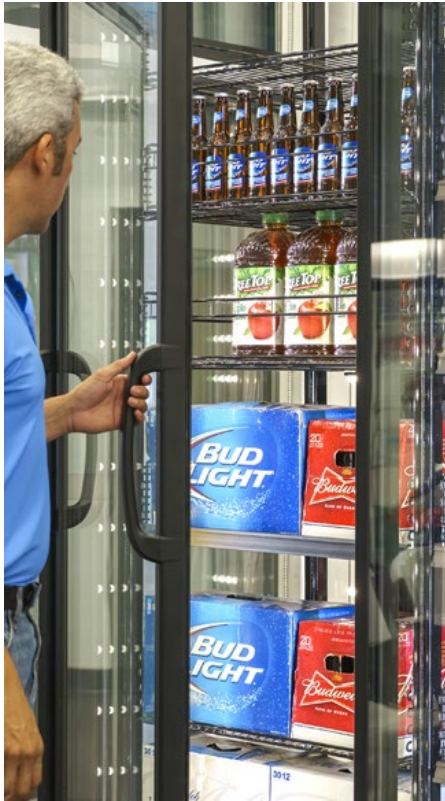
STYLELINE[®]
By Commercial Refrigerator Door Company

www.styleline.com



Superior Product Visibility

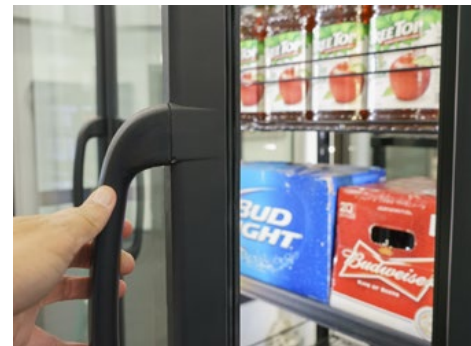
Styleline® RM



- Up to 80% energy savings vs previous Styleline offerings
- Save up to \$800 in energy dollars annually per lineup -
*Pre-DOE Mod//Line NT vs Styleline RM
- DOE 2017 compliant
- Injected molded (RIM) doors are made from a strong, non-conductive composite material and superior insulation
- Energy efficiency and operational performance
- Available in either black or silver
- Excellent durability with STYLELINE® LED Plus lighting

What's Included:

- STYLELINE® LED Plus lighting system
- Five heavy-duty 27" NSF approved black shelves and post with price tag molding and black brackets. White shelves with galvanized post and galvanized brackets are also available
- Standard STYLELINE® Warranty



Heavy duty door handle



Proven & durable hardware