

# Styleline Automatic Beer Cave (ABC) Door Installation Manual

Supplement to Horton Manual

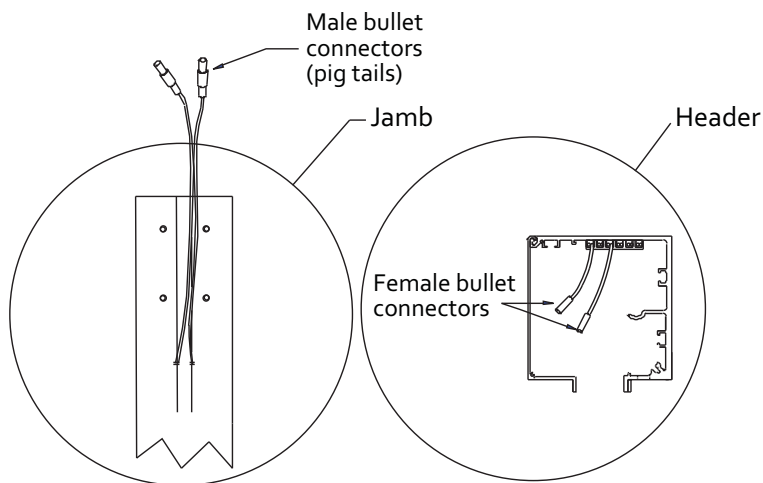
## Identifying Door Model

Identification labels for STYLELINE doors by Commercial Refrigerator Door Co. are located on the right side of the header. This label contains the serial number, model number and heater amps.

## 1. Jamb Wire Connection

- Insert the heater wires, located inside the jambs, through the lower snap bushing located on the sides of the header. See Horton manual for jamb attachment to header.
- Connect jamb heater wire pig tails to female bullet connectors attached to top of header. (Connections should follow the same color wire). NOTE: For reference follow the header top view drawing in step 2.

**CAUTION:** Heater circuit for the side lites, header, slider doors and jambs MUST be separate from the actuator system circuit. This circuit must always be energized when the refrigeration system is energized.



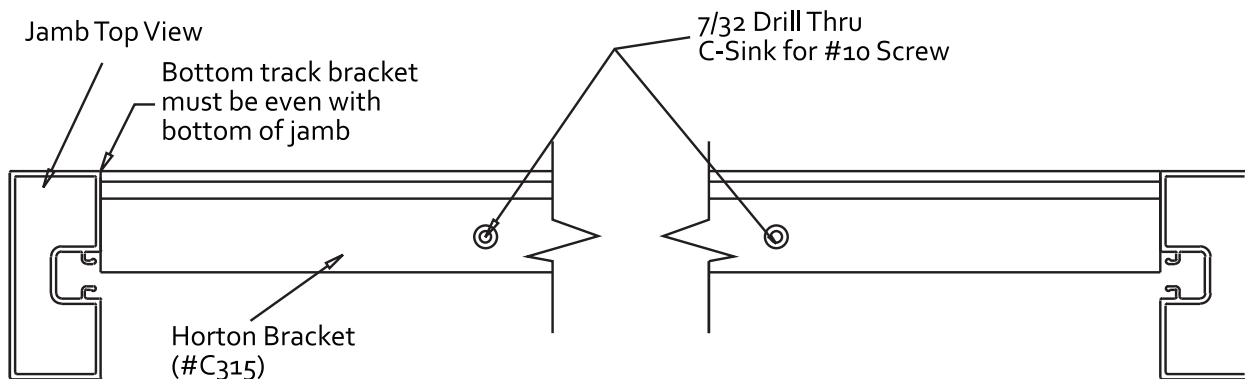
## 2. Side Lite Installation (after jamb/header assembly is secured to opening)

### Mounting Bottom Bracket

- Check that guide bracket (Horton part # C330-1) is mounted to side lite.
- Trace a line from back end of one jamb to next.
- Fasten bottom track bracket (Horton part # C315) to floor, locating the rear edge even with

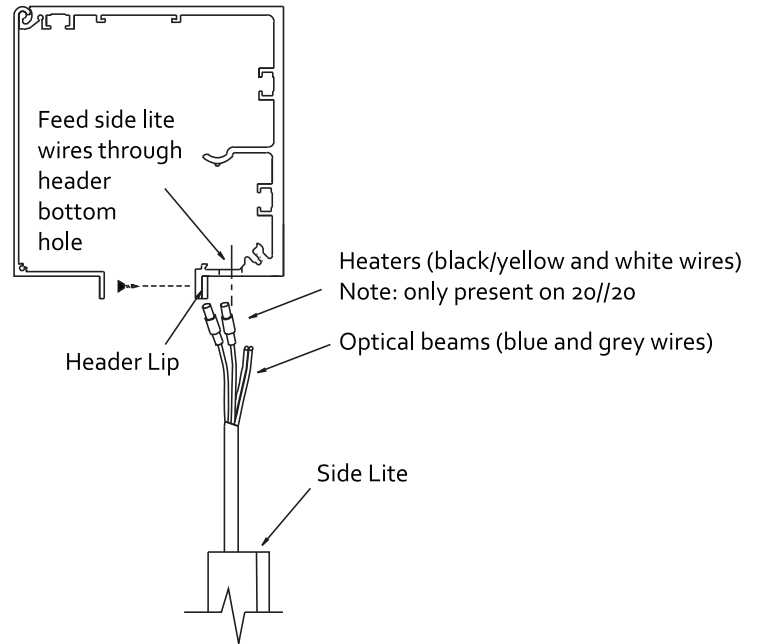
jamb. Line up back side of bracket with line traced on floor.

- Set guide bracket on bottom track bracket (do not fully insert).

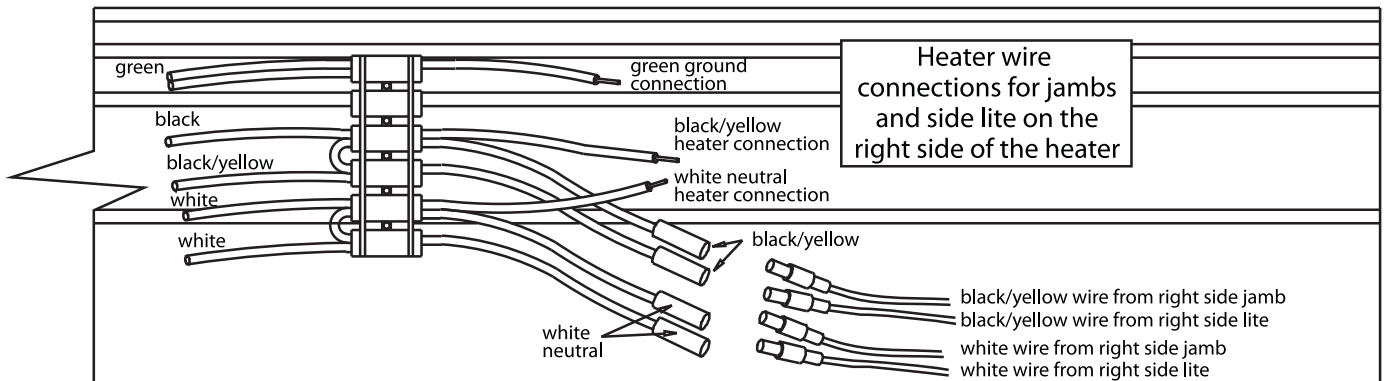


### 3. Side Lite Wire Connections

- a. Feed wires coming from the top of the side lite through the snap bushing located on the bottom of the header. (NOTE: Normal temp systems only have heat in the header and jambs, while 20//20 also provides heat to the side lites and slider doors).
- b. Position side lite into place while pulling wires from the header until the side lite front surface touches the back of the header lip.
- c. Clamp side lite against header lip.
- d. Install #8-18 side lite screws through holes in header lip drilling into the side lite(s) and tighten.
- e. From the back side of the assembly caulk in-between the side lite and jamb.
- f. Connect the heater wire pig tails to the female bullet connectors inside the header. (Connections should follow the same color wire). Normal temp systems do not have side lite heater connections.

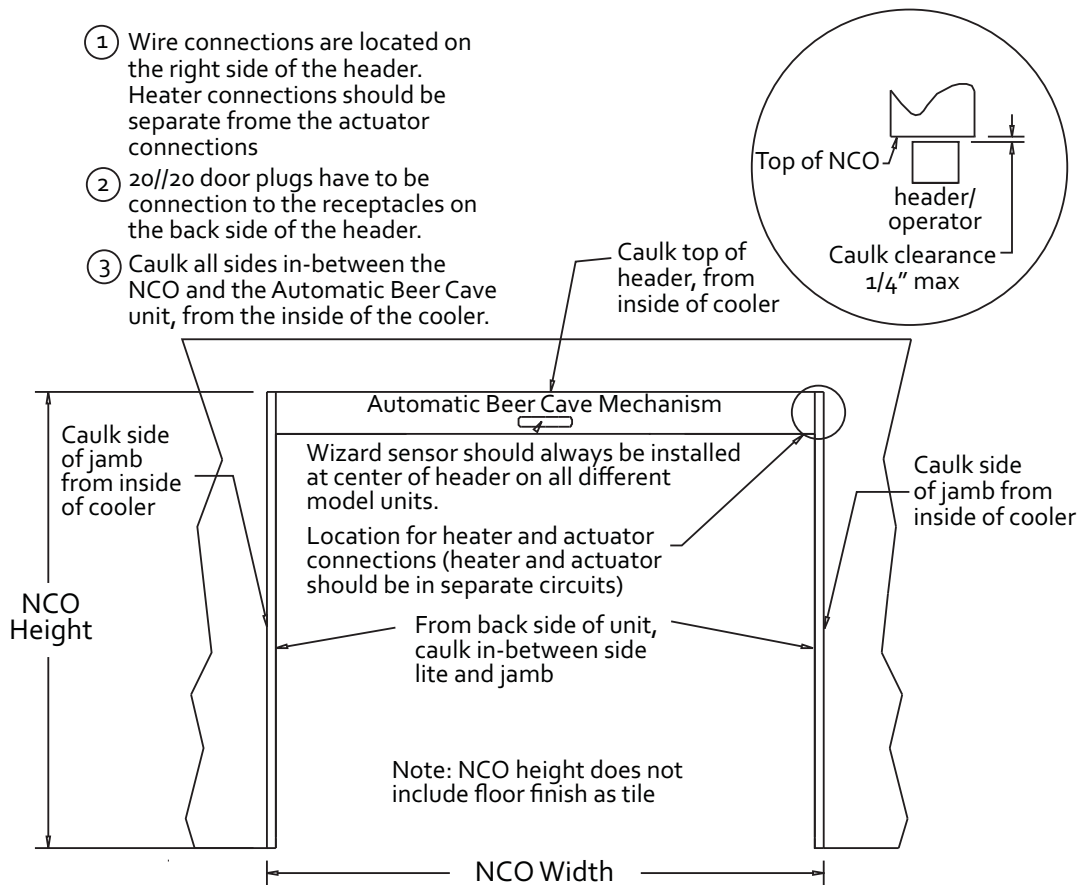


HEADER TOP VIEW



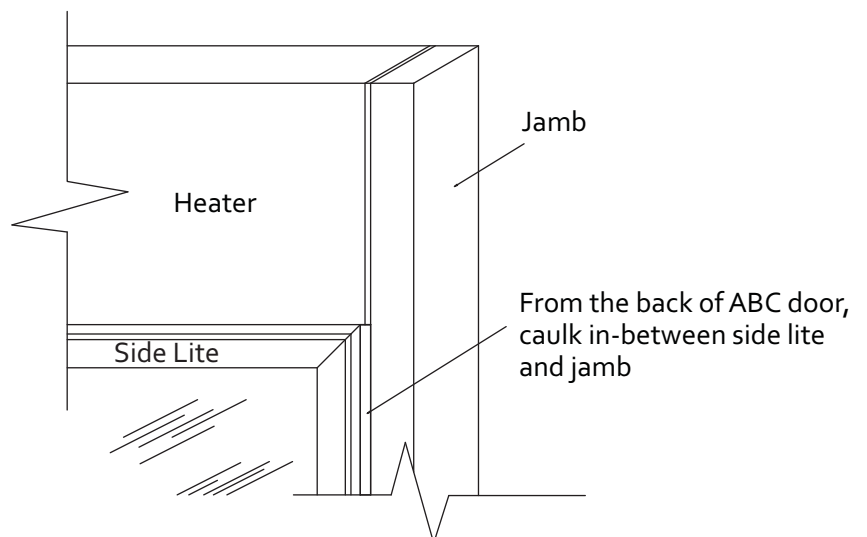
- g. Connect Optical beam wires to the amplifier (follow Horton Installation Instructions).
- h. For two doors, the same connections are made in both sides of the header except the power connections which will always be located at the right side of the header.
- i. In case of an emergency, the side lites do not push open as the Horton doors, instead the header system provides a fly open box control which will automatically open the doors if there is any power outage.

## 4. Power Connection to Header and Perimeter Caulk



	ABC Doors Electrical Specs & NCO					
	20//20			Normal Temp System		
Size (in)	120	108	78	120	108	78
Voltage (V)	120	120	120	120	120	120
Heater (A)	8.74	8.00	5.80	2.98	2.66	2.32
Actuator (A)	3.50	3.50	3.50	3.50	3.50	3.50
Width (in)	120.25	108.25	78.25	120.25	108.25	78.25
Height (in)	90.25	90.25	90.25	90.25	90.25	90.25

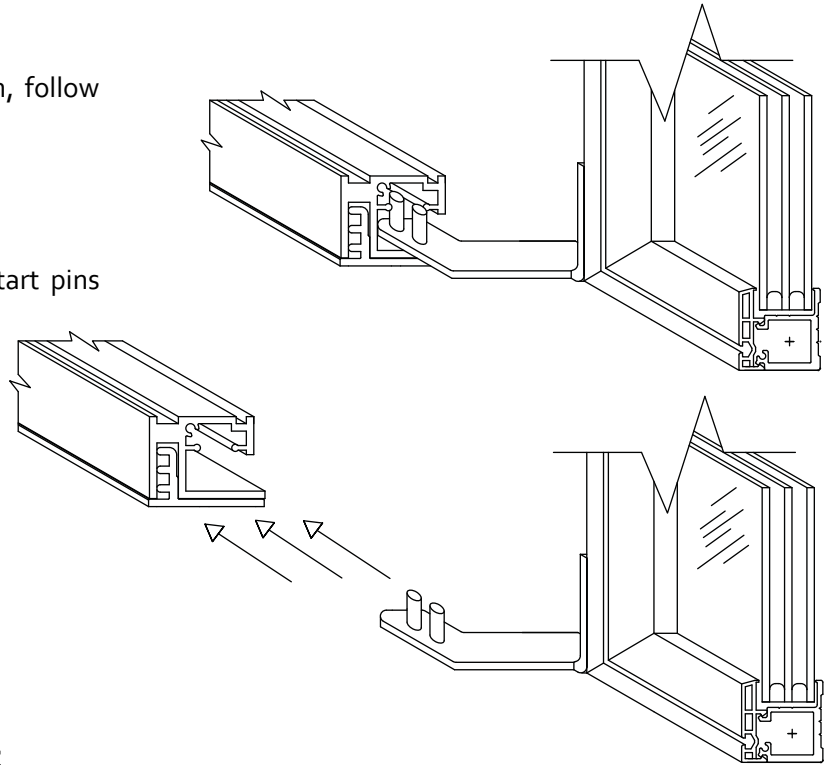
Caulking between jamb and side lite:



## 5. Slider Door Installation

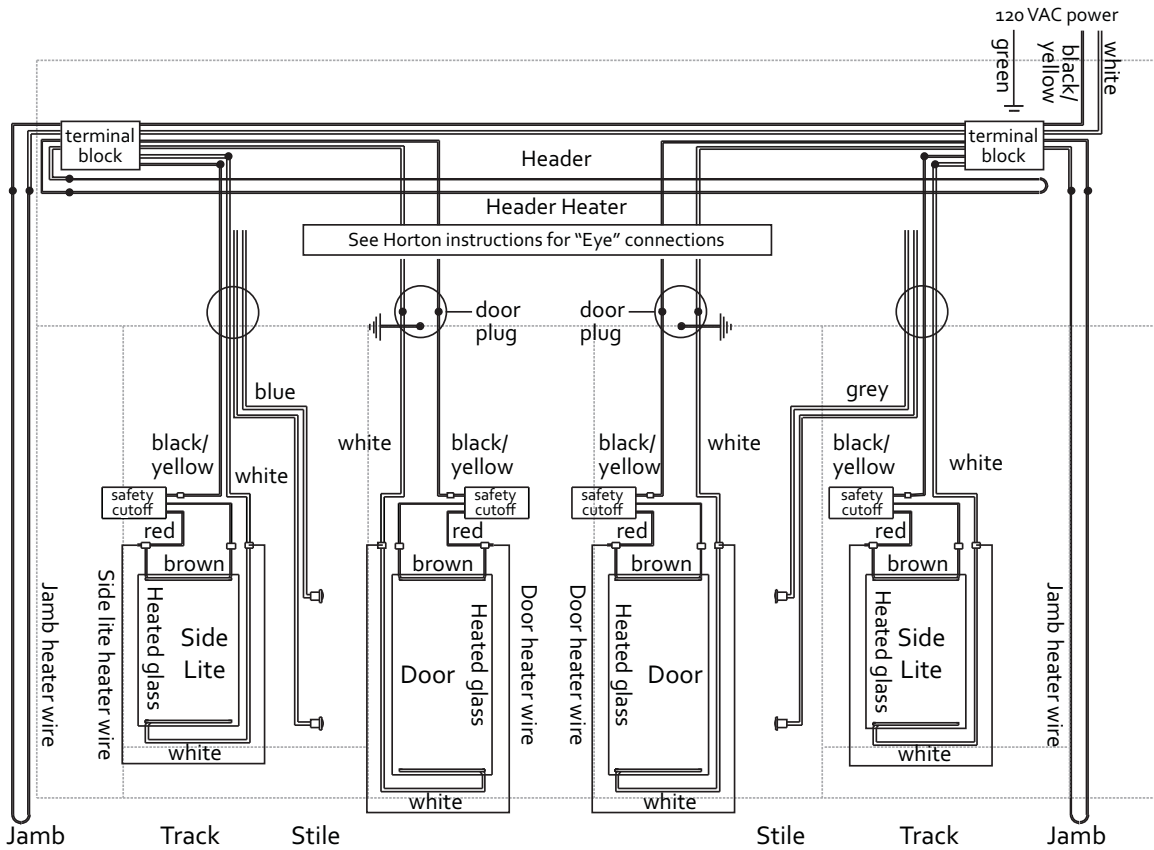
For wheel carriage and hanger installation, follow Horton installation manual.

- Remove end cap from bottom bracket
- Slide bottom guide into track.
- The panel may need to be angle to start pins into the guide.
- Reattach end cap.



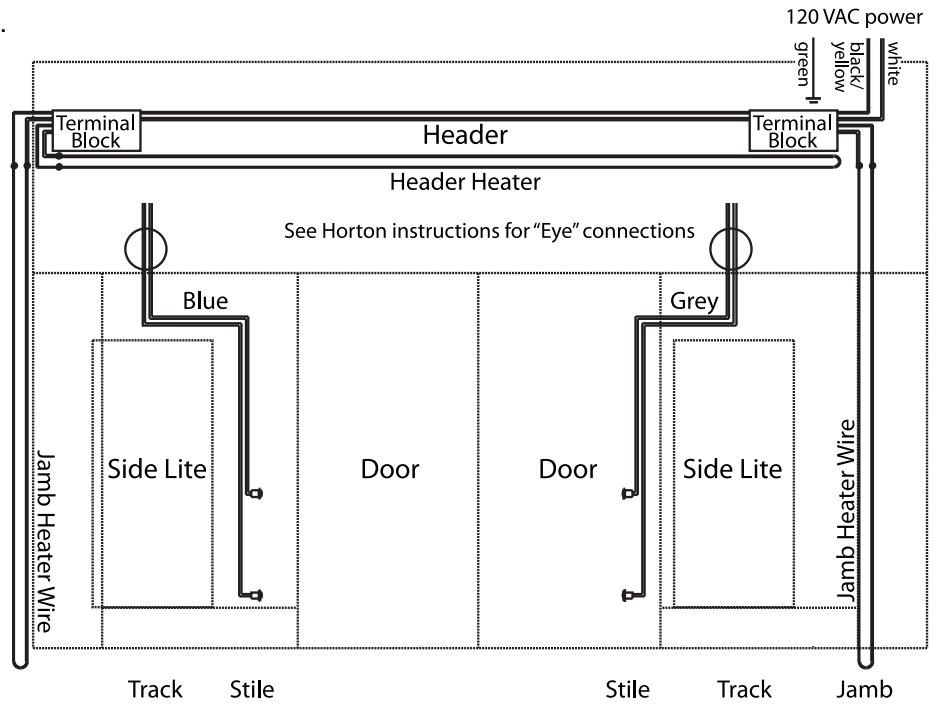
## 6. Four Door 20//20 Wire Schematic

Attention: Heater circuit MUST be separate from the actuator system circuit. Heaters must be energized when refrigeration is on.



## 7. Four Door Normal Temp Wire Schematic

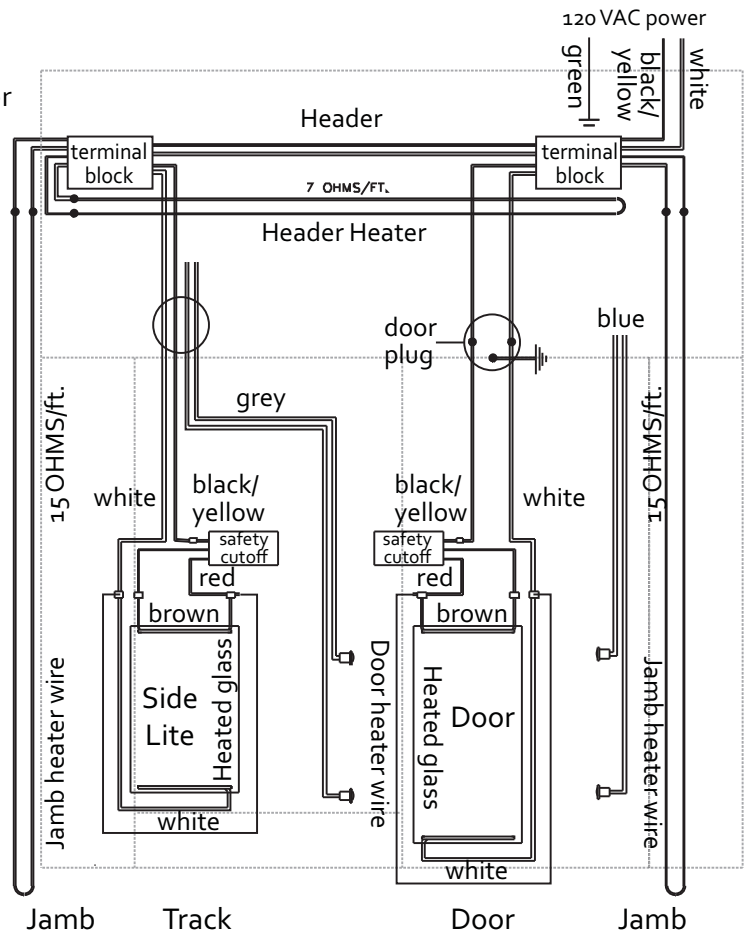
**Attention:** Heater circuit MUST be separate from the actuator system circuit. Heaters must be energized when refrigeration is on.



## 8. Two Door 20//20 Wire Schematic

**Attention:** Heater circuit MUST be separate from the actuator system circuit. Heaters must be energized when refrigeration is on.

**Note:** Motion sensor should be mounted on center of header, NOT center of door opening.



## 9. Two Door Normal Temp Wire Schematic

**Attention:** Heater circuit MUST be separate from the actuator system circuit. Heaters must be energized when refrigeration is on.

**Note:** Motion sensor should be mounted on center of header, NOT center of door opening.

