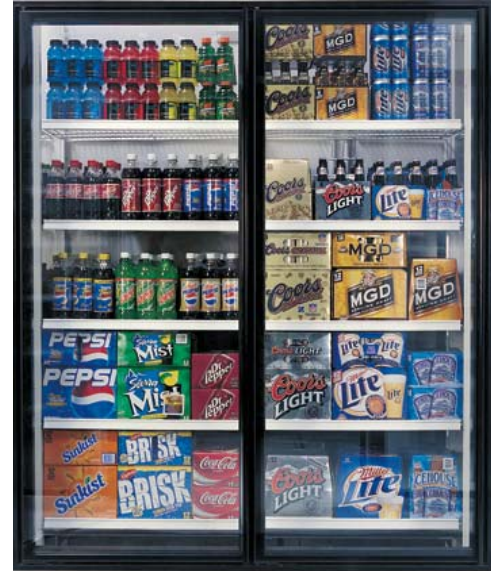


When looks really *do* matter.

With its top-of-the-line designer style, the energy-free STYLELINE[®] F//X sets your store apart from the competition. Not just a pretty face, the F//X is also practical — a perfect combination of beauty and functionality.

Features

- No door or frame heaters means NO energy costs
- Condensation protection up to 65% relative humidity*
- Sleek, designer look with “frameless” door and silk-screened glass
- Largest product viewing area available
- Lifetime finish in anodized bright black
- Low installation and maintenance costs
- Tempered two-pane insulating safety glass
- NSF-certified door, frame & shelving
- UL-certified door and frame
- Reliable door hinge system, hold open cam and torque rod
- Field-reversible swing
- Full-length handle



STYLELINE Exclusive Standard Features

- Stainless steel trim
- Easy-clean covered frames

Package Includes:

- LED Lighting System
- Heavy-duty shelving with price tag molding in black or white
- Shelf standards (posts) with brackets and levelers
- Flangeless design available by request at no additional cost

Optional Upgrades & Accessories

- Low-E coated glass for 75% relative humidity protection
- Super Slide-Trac[®] gravity-flow shelving

*Ideal for temperatures less than 75°F and relative humidity less than 60%



800-237-3940 • sales@STYLELINE.com • www.STYLELINE.com

