

CONDENSED PRICING GUIDE

DOE Complaint Glass Door Products.

Contact Customer Service if the product you are looking for is not listed.

www.styleline.com

042024

Prices and specifications subject to change without notice and do not include applicable freight and tax.

Please Note:

Glass & Energy surcharge will be added to sale orders and final invoices effective 10.3.2022 (excluding freight charges).

DOE Compliant Product Performance Levels

Helping you select the right product

Product	Performance Level
STYLELINE Innovator-NT	75F/55% @ 35F Cooler
STYLELINE Innovator-LT	75F/55% @ -10F Freezer
STYLELINE RM-NT	75F/75% @ 35F Cooler
STYLELINE RM-LT	75F/65% @ -10F Freezer
STYLELINE CL-NT	75F/75% @ 35F Cooler
STYLELINE CL-HH	75F/85% @ 35F Cooler
STYLELINE CL-LT	75F/64% @ -10F Freezer
STYLELINE HDD	75F/75% @ 35F Cooler
STYLELINE Profile	75F/55% @ 35F Cooler

Fully compliant DOE 2017 product portfolio performance levels are exhibiting the highest levels of performance and condensation protection in the industry.



Please Note:
Glass & Energy Surcharge will be added to sale orders and final invoices effective 10.3.2022 (excluding freight charges).

DISCLAIMER: All prices and specifications are subject to change without notice and do not include applicable freight and tax. Prices and Product Specifications shown are list prices. Prices are in U.S. Dollars. Please note, these are just estimated shipping weights and may differ slightly to your total final shipping weight. Actual shipping charges and weights will be calculated and added when your order is processed. See Terms and Conditions for more details.

Expedite Your Quotation/Order



Please fill out the form below to help expedite your quote/order request.

Application:	New Installation <input type="checkbox"/>	Remodel <input type="checkbox"/>	Replacement <input type="checkbox"/>
Number of Doors:	<input type="text"/>	Door Size:	<input type="text"/>
		Door Model:	<input type="text"/>
Door Finish:	Satin Black <input type="checkbox"/>	Satin Silver <input type="checkbox"/>	Bright Black <input type="checkbox"/>
			Bright Silver <input type="checkbox"/>
Door Extrusion:	Smooth <input type="checkbox"/>	Serrated (CL NT only) <input type="checkbox"/>	
Hinging:	Left <input type="checkbox"/>	Right <input type="checkbox"/>	French Style <input type="checkbox"/>
			Door Lock: <input type="checkbox"/>
Lighting:	Standard LED <input type="checkbox"/>	Entrance Door <input type="checkbox"/>	Surface Mount <input type="checkbox"/>
Shelving System:	Standard 27" <input type="checkbox"/>	Slide Trac 36" <input type="checkbox"/>	Super-Slide Trac 36" <input type="checkbox"/>
			43" <input type="checkbox"/>
Shelving Color:	Black Post & Shelves (standard) <input type="checkbox"/>		Shelves Per Door: <input type="text"/>
	Galvanized Post & White Shelves <input type="checkbox"/>		
Door Handle:	Standard Offset <input type="checkbox"/>	Full-length (upcharge) <input type="checkbox"/>	

Subject to availability & pricing.

When Ordering

Full Name	<input type="text"/>
Company Name	<input type="text"/>
E-mail	<input type="text"/>
Phone Number	<input type="text"/>
Ship to Address	<input type="text"/>
Onsite Date Requested	<input type="text"/>
Special Instructions	<input type="text"/>

Information Needed For Replacement. Model/Serial are located on top of each frame.

Model Number	<input type="text"/>	Serial Number	<input type="text"/>
--------------	----------------------	---------------	----------------------

Please Note:

Glass & Energy Surcharge will be added to sale orders and final invoices effective 10.3.2022 (excluding freight charges).

STYLELINE DOORS CONFIGURATION & OPTIONS

Updated: 04/2024

REACH-IN DOORS FOR COOLERS					FREEZER		
DOOR APPLICATION	STYLELINE Innovator	STYLELINE RM	STYLELINE CL	STYLELINE PROFILE	STYLELINE Innovator	STYLELINE RM	STYLELINE CL
Cooler Normal Temp	✓	✓	✓	✓			
Cooler High Humidity			✓				
Freezer					✓	✓	✓
Heavy Duty Entrance Door			✓				
PERFORMANCE LEVELS							
NT: 75°F/62%RH @ 35° Cooler	✓						
NT: 75°F/75%RH @ 35° Cooler		✓	✓ CLNT				
NT: 75°F/55%RH @ 35° Cooler				✓	✓		
HH: 75°F/85%RH @ 35° Cooler			✓ CLHH				
LT: 75°F/64%RH @ -10° Freezer							✓
LT: 75°F/65%RH @ -10° Freezer						✓	
IGU (GLASS PACK)							
2- Pane			✓ CLNT	✓			
3- Pane	✓	✓	✓ CLHH		✓	✓	✓
Argon Fill, Low-E			✓				✓
Anti-Fog Film					✓	✓	✓
All Glass Appearance				✓			
IMPORTANT DOOR SPECS							
DOE Compliant	✓	✓	✓	✓	✓	✓	✓
Energy Controller	✓	✓	✓	✓	✓	✓	✓
Occupancy Sensor			✓	✓ CLHH			✓
Magnetic Door Gasket	✓	✓	✓		✓	✓	✓
Frame Advanced Thermal Projection		✓	✓	✓	✓	✓	✓
Reliable Door Hinge Kit	✓	✓	✓	✓	✓	✓	✓
Stainless Trim Kit	✓	✓	✓		✓	✓	✓
STYLELINE® LED Plus	✓	✓	✓	✓	✓	✓	✓
Shelving Standard / Options	✓	✓	✓	✓ OPTIONAL	✓	✓	✓
Standard Handle	✓	✓	✓	✓	✓	✓	✓
Full-Length Handle			✓				✓
Injected Molded Door Frame	✓	✓			✓	✓	
Aluminum Door Frame			✓	All Glass			✓
Door Locks	✓ External	✓ External	✓		✓ External	✓ External	✓
DOOR SWING							
Standard Left/Right	✓	✓	✓	✓	✓	✓	✓
Reversible			✓ CLNT				
French Style Opening - No Mullion				✓			
French Style Opening - With Mullion			✓ CLNT				
HEAT CONFIGURATION							
Glass							
Door Rail			✓ CLHH				✓
Frame	✓	✓	✓	✓	✓	✓	✓
FINISHES AVAILABLE							
Bright Black			✓				✓
Bright Silver			✓				✓
Satin Black	✓	✓	✓	✓	✓	✓	✓
Satin Silver		✓	✓	✓		✓	✓
SIZES AVAILABLE							
30"X75"	✓				✓		
24"X63", 26"X63", 30"X63"			✓				✓
24"X72", 26"X72", 30"X72"			✓				✓
30"X63", 30"X66", 30"X72", 30"X80"			✓				✓
24"X75", 30"X75"				✓			
24"X75", 30"X75", 30"X80"		✓				✓	

Please Note:

Glass & Energy Surcharge will be added to sale orders and final invoices effective 10.3.2022 (excluding freight charges).

DISCLAIMER: All prices and specifications are subject to change without notice and do not include applicable freight and tax. Prices and Product Specifications shown are list prices. Prices are in U.S. Dollars. Please note, these are just estimated shipping weights and may differ slightly to your total final shipping weight. Actual shipping charges and weights will be calculated and added when your order is processed. See Terms and Conditions for more details.

Contact customer service for official quote. Visit www.styleline.com for full range of STYLELINE® products.

Styleline [®] CL	DOOR AND FRAME SYSTEM								
	24x63	26x63	30x63	30x66	30x72	30x80	24x72	26x72	26x80
STYLELINE CL-NT	3,128	3,241	3,393	3,445	3,568	3,992	3,267	3,397	3,672
Package Weight	220lbs	230lbs	250lbs	255lbs	250lbs	280lbs	255lbs	305lbs	335lbs
STYLELINE CL-HH	3,833	3,969	4,157	4,222	4,373	4,892	4,005	4,161	4,500
Package Weight	235lbs	240lbs	265lbs	270lbs	265lbs	290lbs	270lbs	320lbs	350lbs
STYLELINE CL-LT	4,708	4,874	5,105	5,105	5,370	6,007	4,916	5,111	5,527
Package Weight	235lbs	240lbs	265lbs	270lbs	265lbs	290lbs	270lbs	320lbs	350lbs

Styleline INNOVATOR	DOOR AND FRAME	Styleline [®] RM	DOOR AND FRAME SYSTEM		
	30x75		24x75	30x75	30x80
STYLELINE Innovator-NT	2,714	STYLELINE RM-NT	2,675	2,924	3,270
Package Weight	320lbs	Package Weight	265lbs	320lbs	350lbs
STYLELINE Innovator-LT	3,286	STYLELINE RM-LT	4,486	4,858	5,377
Package Weight	265lbs	Package Weight	265lbs	320lbs	350lbs

What's Included:

- DOE 2017 Compliant
- Reliable door hinge and hold open cam
- Stainless steel trim with new and improved magnetic door gasket
- One-time adjustment torque rod and self-closing hinge system
- Pre-wired Energy Controller
- Occupancy Sensor for HH & LT applications
- STYLELINE® LED Plus lighting system
- Five heavy-duty 27" NSF approved black flat shelves
- Seven heavy-duty 27" NSF approved black flat shelves for 80" doors
- Shelving price tag molding
- Black post
- Standard handle
- Standard STYLELINE® Warranty

System Performance Levels:

DOOR MODEL	PERFORMANCE LEVELS
STYLELINE Innovator-NT	75°F/55%RH- @35°F Cooler Temp
STYLELINE Innovator-LT	75°F/55%RH- @35°F Freezer Temp
DOOR MODEL	PERFORMANCE LEVELS
STYLELINE RM-NT	75°F/75%RH- @35°F Cooler Temp
STYLELINE RM-LT	75°F/65%RH- @35°F Freezer Temp
DOOR MODEL	PERFORMANCE LEVELS
STYLELINE CL-NT	75°F/75%RH- @35°F Cooler Temp
STYLELINE CL-HH	75°F/85%RH- @35°F Cooler Temp
STYLELINE CL-LT	75°F/64%RH- @-10°F Freezer Temp

Options Available:

- Galvanized post & white shelves
- Gravity flow shelving system
- Glide sheets
- Perimeter guards
- Lane dividers
- Mirrored mullions
- Surface mount lighting kit
- Full length handle*
- Internal door lock*
- External door lock

* STYLELINE® CL series only



Please Note:

Glass & Energy Surcharge will be added to sale orders and final invoices effective 10.3.2022 (excluding freight charges).

DISCLAIMER: All prices and specifications are subject to change without notice and do not include applicable freight and tax. Prices and Product Specifications shown are list prices. Prices are in U.S. Dollars. Please note, these are just estimated shipping weights and may differ slightly to your total final shipping weight. Actual shipping charges and weights will be calculated and added when your order is processed. See Terms and Conditions for more details.

Contact customer service for official quote. Visit www.styleline.com for full range of STYLELINE® products.

Styleline® HDD



HEAVY DUTY ENTRANCE DOOR	DOOR AND FRAME SYSTEM			
	26x80	30x80	36x80	36x84
HDD SINGLE DOOR	5,381	5,381	5,381	5,652
Package Weight	200lbs	225lbs	230lbs	235lbs
HDD DOUBLE-DOOR	8,869	8,869	8,869	9,314
Package Weight	400lbs	450lbs	460lbs	470lbs

HEAVY DUTY SERVICE DOOR	DOOR AND FRAME SYSTEM			
	26x80	30x80	36x80	36x84
HDD SERVICE DOOR	3,555	5,381	5,381	5,652
Package Weight	200lbs	225lbs	230lbs	235lbs

System Performance Levels:

DOOR MODEL	PERFORMANCE LEVELS
STYLELINE CL	75°F/75%RH- @35°F Cooler Temp

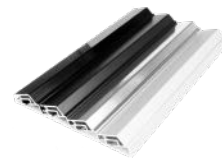
What's Included:

- DOE 2017 Compliant
- Top-mounted heavy-duty hydraulic closer
- Stainless steel trim with new and improved magnetic door gasket
- High performance glass pack, Argon fill and Low-E
- Pre-wired Energy Controller
- Occupancy Sensor for HH & LT applications
- Door sweeps*
- Tapered internal push bar
- Easy-clean coved frames
- Internal 7.5" stainless kick plate
- Full frame threshold
- Standard handle
- Exterior 9.5" silk screen
- Top 1/3 is clear glass. Bottom 2/3 is black silk screen**
- Standard STYLELINE® Warranty

Options Available:

- STYLELINE® LED Plus lighting
- Full-length handle
- Graph-X Illuminated glass
- No threshold configuration
- Center mullion on double-doors
- 12" & 24" tall Kick Plate
- 10" tall Diamond Kick Plate
- Single or double door locks
- External & internal kick plate
- Kick plate finishes: Stainless & Diamond pattern
- Roll-Mart Cart
- Bumper guards

* Entrance Door only
** Service Door only



Finishes



Standard Handle



Bumper Guard



Front Silk Screen



Standard Push Bar



Stainless Kick Plate



Full-length Handle

Please Note:

Glass & Energy Surcharge will be added to sale orders and final invoices effective 10.3.2022 (excluding freight charges).

DISCLAIMER: All prices and specifications are subject to change without notice and do not include applicable freight and tax. Prices and Product Specifications shown are list prices. Prices are in U.S. Dollars. Please note, these are just estimated shipping weights and may differ slightly to your total final shipping weight. Actual shipping charges and weights will be calculated and added when your order is processed. See Terms and Conditions for more details.

Contact customer service for official quote. Visit www.styleline.com for full range of STYLELINE® products.

Styleline® ABC

AUTOMATIC BEER CAVE	FINISHES		
	SATIN SILVER	SATIN BLACK	BRIGHT SILVER
78" LEFT TO RIGHT	41,560	44,803	46,986
78" RIGHT TO LEFT	41,560	44,803	46,986
108" DOUBLE SLIDER	46,237	49,480	51,664
120" DOUBLE SLIDER	51,539	54,782	56,965
144" DOUBLE SLIDER	58,836	62,578	65,072



What's Included:

- ADA Compliant
- DOE 2017 Compliant
- UL-certified Door & Frame
- Sliding Door Sweeper Included
- Energy Efficient, no-heat glass pack technology
- Header, Jam and Door/Window Components are Included
- Durable Anodized Finishes in Bright Silver, Satin Silver and Satin Black
- Available as 78" Single-slider, 108", 120" and 144" Double-slider
- Automatic "fly-open" Battery Backup System
- Detection Motion Radar
- Integrated IR Receiver
- 6 position key selector
- Standard STYLELINE® Warranty
- **Installation NOT INCLUDED. Contact Customer Service.**

Finishes Available



Detection Motion Radar allows the door to open automatically.

Integrated IR Receiver displays the door mode/state.

6 position key selector
Key selector chooses the mode of operation.



Please Note:

Glass & Energy Surcharge will be added to sale orders and final invoices effective 10.3.2022 (excluding freight charges).

DISCLAIMER: All prices and specifications are subject to change without notice and do not include applicable freight and tax. Prices and Product Specifications shown are list prices. Prices are in U.S. Dollars. Please note, these are just estimated shipping weights and may differ slightly to your total final shipping weight. Actual shipping charges and weights will be calculated and added when your order is processed. See Terms and Conditions for more details.

Contact customer service for official quote. Visit www.styleline.com for full range of STYLELINE® products.

Styleline® PROFILE	FRENCH HINGED DOOR SIZES	
	24x75	30x75
STYLELINE PROFILE	4,225	4,320
Package Weight	265lbs	320lbs



French Hinged Style Shown

SHELVING SIZE	DOOR SIZE	
	24x75	30x75
48x27	651	
60x27		756

What's Included:

- DOE 2017 Compliant
- French hinged glass doors with no center mullion
- New concave wiper design
- One-time adjustment torque rod and self-closing hinge system
- Pre-wired Energy Controller
- STYLELINE® LED Plus lighting system
- Ultra-thin glass door perimeter
- Shelving not included. Contact Customer Service
- Standard handle
- Standard STYLELINE® Warranty

Options Available:

- NSF approved shelving system
- Surface mount lighting kit



4 Door Shelving With Additional Accessories Shown

Please Note:

Glass & Energy Surcharge will be added to sale orders and final invoices effective 10.3.2022 (excluding freight charges).

DISCLAIMER: All prices and specifications are subject to change without notice and do not include applicable freight and tax. Prices and Product Specifications shown are list prices. Prices are in U.S. Dollars. Please note, these are just estimated shipping weights and may differ slightly to your total final shipping weight. Actual shipping charges and weights will be calculated and added when your order is processed. See Terms and Conditions for more details.

Contact customer service for official quote. Visit www.styleline.com for full range of STYLELINE® products.

WINDOW SIZE	WINDOW NET COOLER OPENING	WINDOW NORMAL TEMP	WINDOW HIGH HUMIDITY TEMP	WINDOW LOW-TEMP	WINDOW TRIM FRAME
12x60	12" x 60"	1,970	2,538	2,792	453
12x63	12" x 64-5/8"	2,056	2,649	2,915	456
12x72	12" x 73-9/16"	2,160	2,782	3,059	472
18x60	18" x 60"	2,203	2,837	3,119	472
18x72	18" x 73-9/16"	2,455	3,155	3,473	486
24x24	24" x 24"	1,822	2,347	2,582	437
24x60	24" x 60"	2,366	3,044	3,348	462
24x72	24-5/16" x 73-9/16"	2,681	3,505	4,024	471
18x63	18" x 64-5/8"	2,228	2,868	3,145	472
24x63	24-5/16" x 64-5/8"	2,455	3,157	3,657	465
26x63	27-1/16" x 64-5/8"	2,534	3,259	3,788	467
26x72	27-1/16" x 73-9/16"	2,977	3,548	4,146	473
26x80	27-1/16" x 81-1/2"	2,977	3,823	4,467	479
30x30	30" x 30"	2,024	2,605	2,868	446
30x60	30" x 60"	2,591	3,330	3,663	472
30x63	31" x 64-5/8"	2,684	3,449	4,007	470
30x66	31" x 67-9/16"	2,582	3,319	3,874	472
30x72	31" x 73-9/16"	2,896	3,743	4,200	489
30x80	31" x 81-1/2"	3,126	3,984	4,679	1,296
36x36	36" x 36"	2,288	2,944	3,238	482
36x60	36" x 60"	2,754	3,539	3,901	470
36x63	36" x 64-5/8"	2,902	3,728	4,102	474
36x72	36" x 73-9/16"	3,129	4,021	4,423	474
40x40	40" x 40"	2,462	3,168	3,485	474
40x60	40" x 60"	2,904	3,730	4,104	473
40x63	40" x 64-5/8"	2,990	3,840	4,228	473
40x72	40" x 73-9/16"	3,279	3,985	4,631	489
48x48	48" x 48"	2,863	3,678	4,047	471
48x60	48" x 60"	3,119	3,678	4,405	489
48x63	48" x 64-5/8"	3,267	4,193	4,612	482
48x72	48" x 73-9/16"	3,556	4,573	5,018	489

All dimensions in inches

What's Included:

- DOE 2017 Compliant
- No heat in glass pack keeps energy costs low
- High performance, 3-pane, Low-E, Argon filled and fully tempered glass package
- The interior side of Fixed Window has a black vinyl trim that gives the interior a "finished" look without having to use optional trim frames kits
- Standard STYLELINE® Warranty



Options Available:

- Satin Black, Satin Silver, Bright Silver
- Smooth or Serrated

Please Note:

Glass & Energy Surcharge will be added to sale orders and final invoices effective 10.3.2022 (excluding freight charges).

DISCLAIMER: All prices and specifications are subject to change without notice and do not include applicable freight and tax. Prices and Product Specifications shown are list prices. Prices are in U.S. Dollars. Please note, these are just estimated shipping weights and may differ slightly to your total final shipping weight. Actual shipping charges and weights will be calculated and added when your order is processed. See Terms and Conditions for more details.

System Performance Levels:

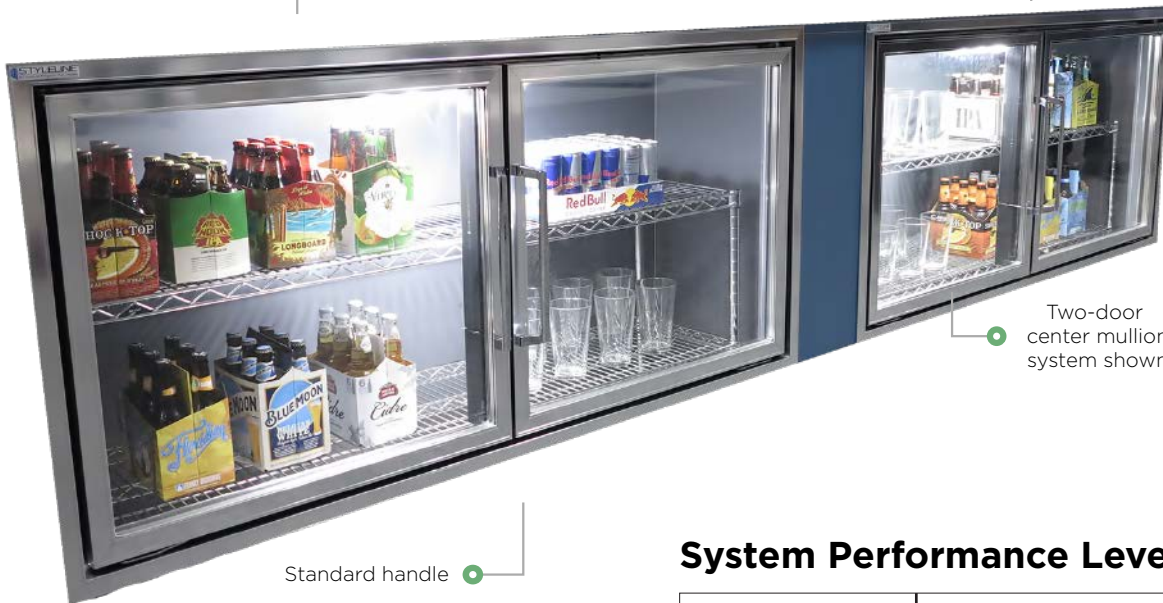
DOOR MODEL	PERFORMANCE LEVELS
STYLELINE CL-NT	75°F/75%RH- @35°F Cooler Temp
STYLELINE CL-HH	75°F/85%RH- @35°F Cooler Temp
STYLELINE CL-LT	75°F/64%RH- @-10°F Freezer Temp

Contact customer service for official quote. Visit www.styleline.com for full range of STYLELINE® products.

DOOR #	PART# GUIDE	DOOR SIZES	NET COOLER OPENINGS	NORMAL TEMP	HIGH HUMIDITY	LOW TEMP
1	01H1	24 3/4" x 31 3/8"	26 5/8" x 33 3/16"	2,381	3,175	3,573
2	02H1	24 3/4" x 31 3/8"	51 7/8" x 33 3/16"	4,763	6,350	7,144
3	03H1	24 3/4" x 31 3/8"	77 1/8" x 33 3/16"	7,144	9,526	10,717
4	04H1	24 3/4" x 31 3/8"	103 3/8" x 33 3/16"	9,526	12,701	14,288
1	01H3	29 15/16" x 31 9/16"	31 13/16" x 33 3/8"	2,608	3,402	3,799
2	02H3	29 15/16" x 31 9/16"	62 1/4" x 33 3/8"	5,216	6,804	7,598
3	03H3	29 15/16" x 31 9/16"	92 11/16" x 33 3/8"	7,825	10,206	11,397
4	04H3	29 15/16" x 31 9/16"	123 1/8" x 33 3/8"	10,433	13,608	15,196
1	01H4	31 3/8" x 24 3/4"	33 1/4" x 26 9/16"	2,835	3,629	4,026
2	02H4	31 3/8" x 24 3/4"	65 1/8" x 26 9/16"	5,670	7,258	8,051
3	03H4	31 3/8" x 24 3/4"	97 1/8" x 26 9/16"	8,505	10,886	12,078
4	04H4	31 3/8" x 24 3/4"	129 1/8" x 26 9/16"	11,340	14,515	16,103

All standard finishes available

Available for cooler, high humidity and freezer applications



Options Available:

- LED lighting
- Integrated door lock

System Performance Levels:

DOOR MODEL	PERFORMANCE LEVELS
STYLELINE CL-NT	75°F/75%RH- @35°F Cooler Temp
STYLELINE CL-HH	75°F/85%RH- @35°F Cooler Temp
STYLELINE CL-LT	75°F/64%RH- @-10°F Freezer Temp

Please Note:

Glass & Energy Surcharge will be added to sale orders and final invoices effective 10.3.2022 (excluding freight charges).

DISCLAIMER: All prices and specifications are subject to change without notice and do not include applicable freight and tax. Prices and Product Specifications shown are list prices. Prices are in U.S. Dollars. Please note, these are just estimated shipping weights and may differ slightly to your total final shipping weight. Actual shipping charges and weights will be calculated and added when your order is processed. See Terms and Conditions for more details.