

Remove Hinge KIT

- **Locate the Screw:**

Identify the screw that secures the Hinge Kit in place. (Figure 1)

- **Unscrew:**

Using a Hex L-Key 5/32 unscrew the screw.

- **Remove the Hinge Kit:**

Once the screw is removed, you can proceed to detach the Hinge Kit from its position. (Figure 2)

- **Remove the Retainer Ring:**

Carefully detach the retainer ring from its position. Make sure to handle it gently to avoid any damage. (Figure 2)

- **Flip the Cam:**

Once the retainer ring is removed, rotate the cam to the opposite position. Ensure that it is securely in place after flipping. (Figure 3)

- **Reattach the Retainer Ring:**

After successfully flipping the cam, reattach the retainer ring to secure everything in its new configuration. (Figure 3)



Figure 1

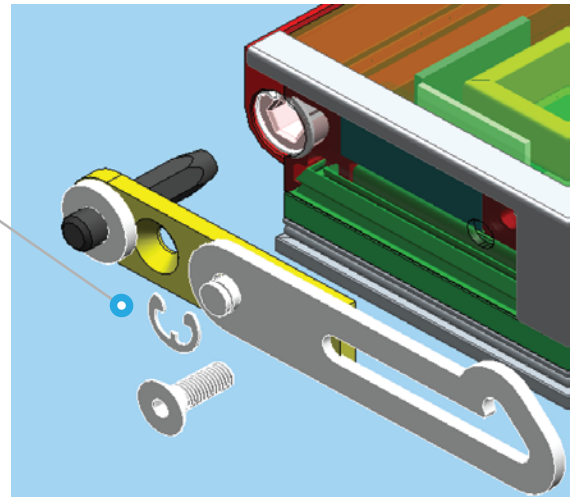


Figure 2

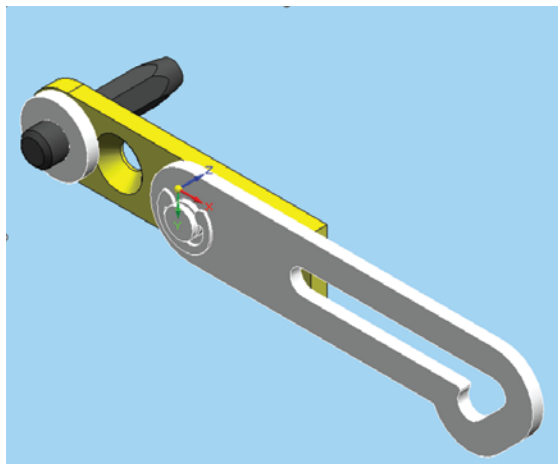


Figure 3

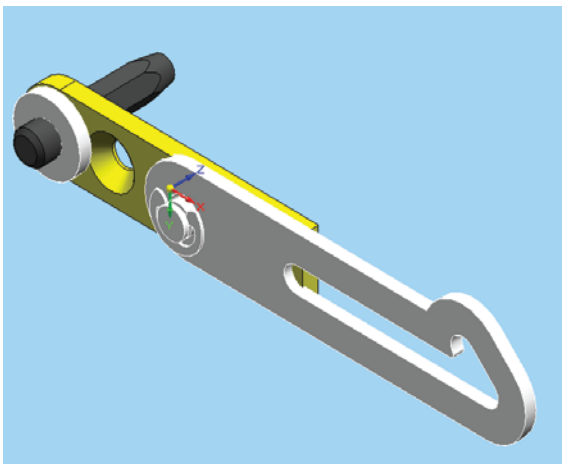


Figure 3

We have 3 rivets for each bracket, remove the rivets using the drill.
Please follow the instructions below to complete this task.



Figure 1

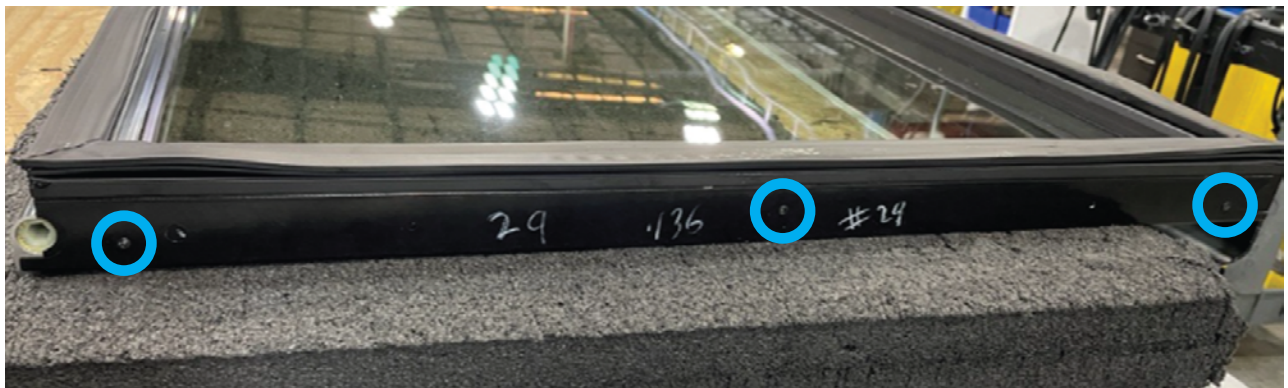


Figure 1

Preparation:

- Ensure you have the appropriate drill and drill bits for rivet removal.
- Wear safety goggles and protective gear to ensure your safety.

Removal Process:

- Locate the three rivets for each bracket. (Figure 1)
- Use the drill to carefully remove each rivet.
- Make sure to maintain control of the drill to avoid damaging the bracket or surrounding areas.

Hinge Kit Assembly

Positioning:

- Place the hinge kit on the opposite side. (Figure 1)

Securing:

- Use the same screws that were removed to secure the hinge kit in its new position. (Figure 2)

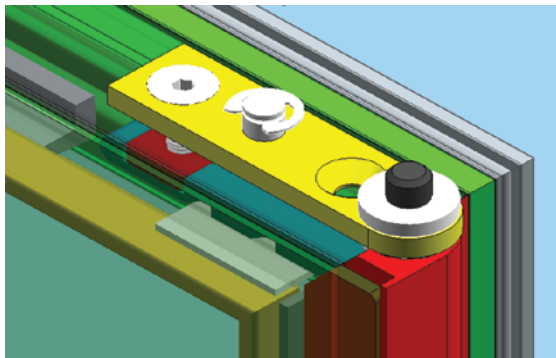


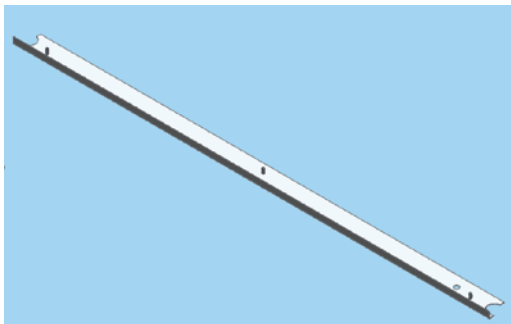
Figure 1



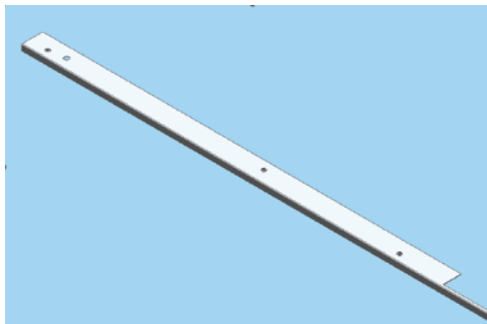
Figure 2

Reversible KIT Parts

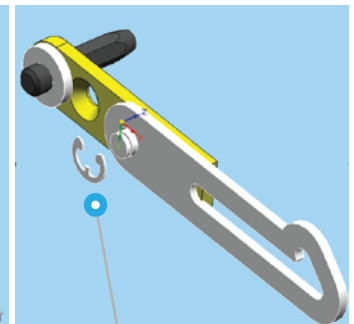
KIT will have 2-brackets(Top & Bottom), 6 rivets & retainer ring in the package



Top Bracket



Bottom Bracket



C-clip Retainer

Bracket Installation

Alignment:

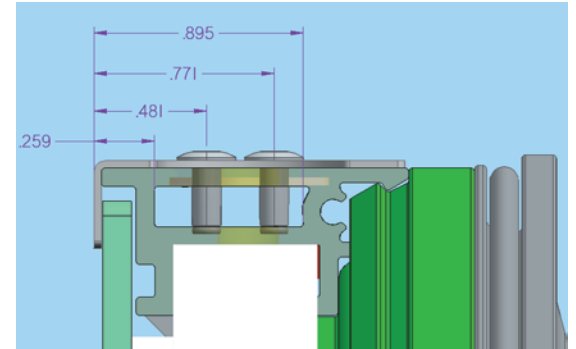
- Begin by aligning the brackets with the handle side for proper positioning. (Figure 1)

Riveting:

- Proceed to rivet the bracket to the aluminum extrusion securely. (Figure 1)

Final Check:

- After installation, double-check that everything is aligned and secured properly.



Rivet Position



Figure 1

Replacement Parts KIT:

Hinge	Part No	Description
Right	1000004500	RH REVERSIBLE KIT - CONVERTING LH DOOR TO RH SWING
Left	1000004501	LH REVERSIBLE KIT - CONVERTING RH DOOR TO LH SWING